



## User Group Information

Seneca High School

### Seneca High School Gymnasium

Addition

223002

Seneca, IL

March 07, 2022

---

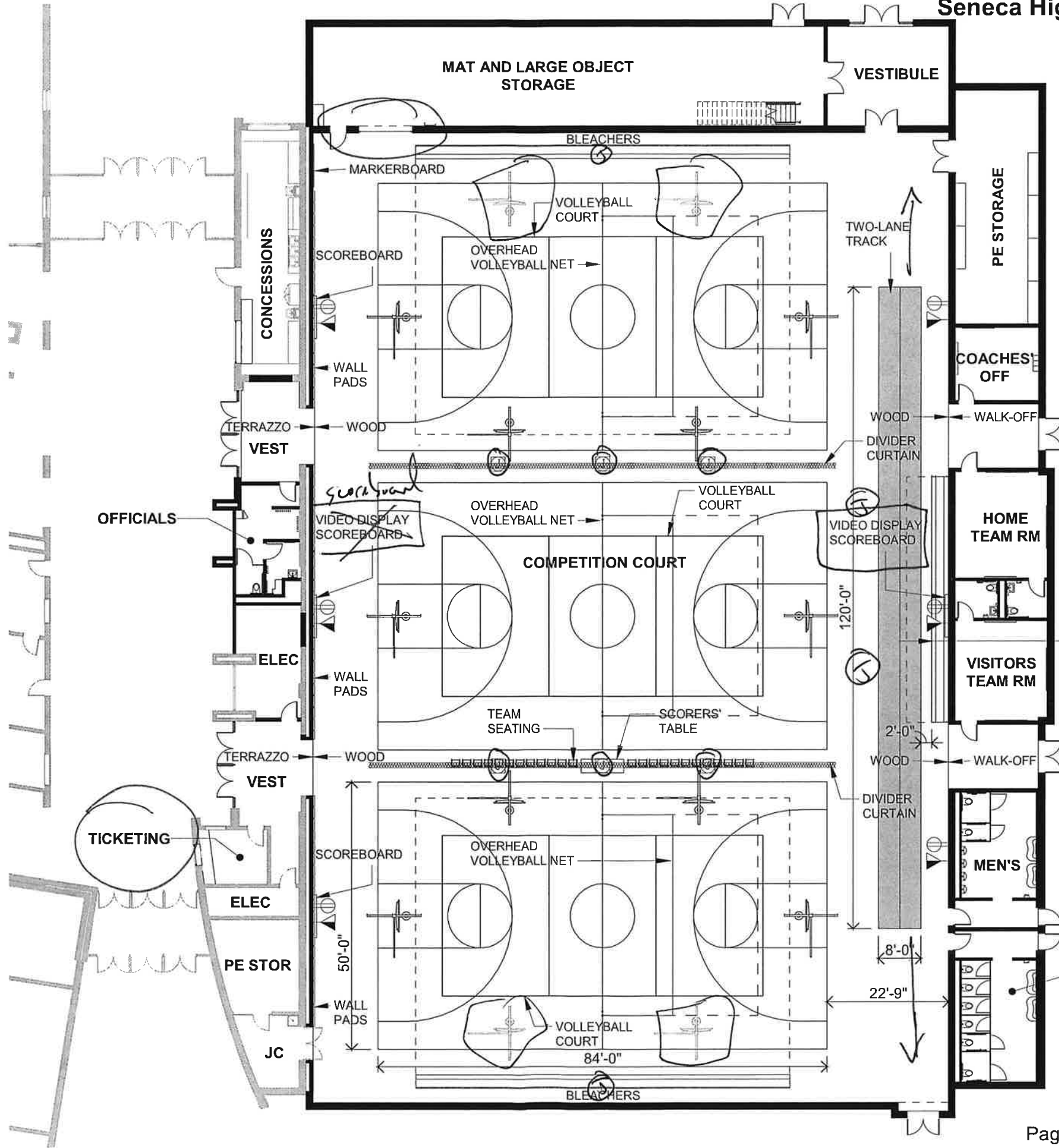
UG 01	GYMNASIUM
UG 02	BUILDING SECTION
UG 03	BUILDING SECTION 2
UG 04	BUILDING SECTION 3
UG 05	MAT AND LARGE OBJECT STORAGE
UG 06	PE STORAGE
UG 07	TEAMS ROOMS
UG 08	OFFICIALS AND COACHES' ROOM
UG 09	TOILET ROOMS
UG 10	CONCESSIONS
UG 11	MEZZANINE



# Seneca High School Gymnasium Addition

Seneca High School

March 07, 2022



**NOTES:**  
 REINSTALL MAT LIFTS IN LARGE STORAGE ROOM

**FINISHES:**  
 FLOORING- WOOD  
 WALLS- PRECAST AND PAINT  
 CEILING- EXPOSED  
 LIGHTING- LED

**QUESTIONS:**  
 - AV NEEDS? PROJECTOR? WIFI  
 - MARKERBOARDS AND WHERE?  
 - SWITCH LOCATION FOR LIGHTS AND DIVIDER CURTAINS?  
 - ALL GLASS BACKBOARDS?  
 - WALL PADS? LOCATION AND WIDTH  
 - TYPE OF FLOORING IN VESTIBULES?  
 - REMOVABLE MULLIONS AT DOORS FROM VESTIBULE TO LOBBY?  
 - TWO-LANE TRACK FLOORING DELINIATION?

## ELECTRICAL SYMBOL KEY

- DUPLEX RECEPTACLE
- DOUBLE DUPLEX RECEPTACLE
- SURFACE MOUNT DEVICES
- SINGLE LIGHT SWITCH
- WALL OR CEILING PROJECTOR
- TV OUTLET (HIGH AND/OR LOW)
- DATA OUTLET
- FLOOR BOX (POWER AND DATA)

## GYMNASIUM ADDITION PLAN

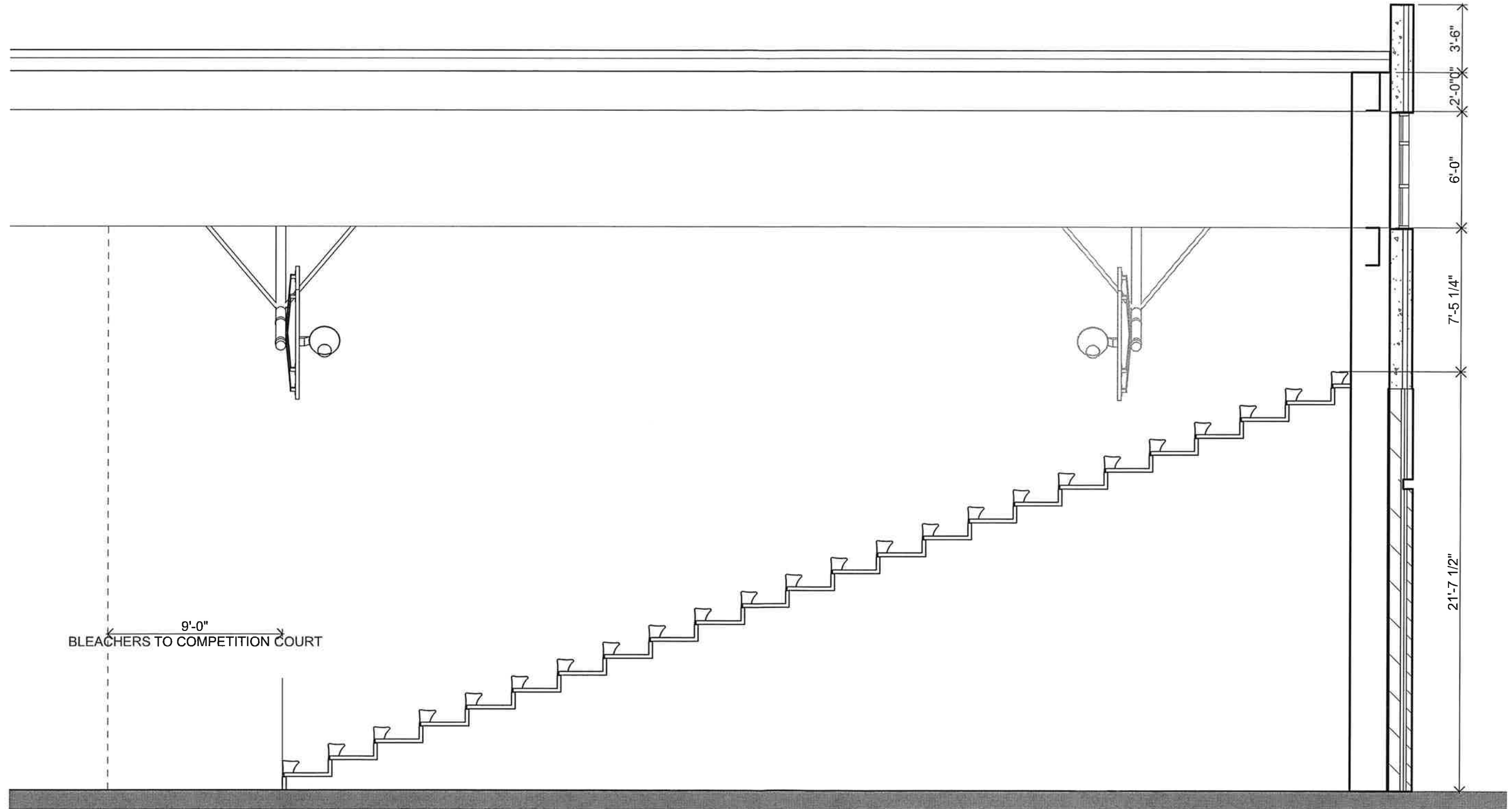
3/64" = 1'-0"  
0 16' 32'

3/8/2022 10:40:04 AM  
C:\Users\mcrane\Documents\Seneca HS Central (2021)\_mcrane\KVVWT.rvt  
\\wae-srv-ll.woldae.com\Illinois\SD\_Seneca\Rev\1\Seneca HS Central (2021).rvt

*3 courts - all wood*  
*- make comp. court w/ 6 hoops*  
*- aux might have 4 courts*

*E.O. made April*  
*- End of Design Development*  
*stair, color, wall pads,*  
*ornate finishes*

*- FFE*



9'-0"  
BLEACHERS TO COMPETITION COURT

**BUILDING SECTION**

3/16" = 1'-0"

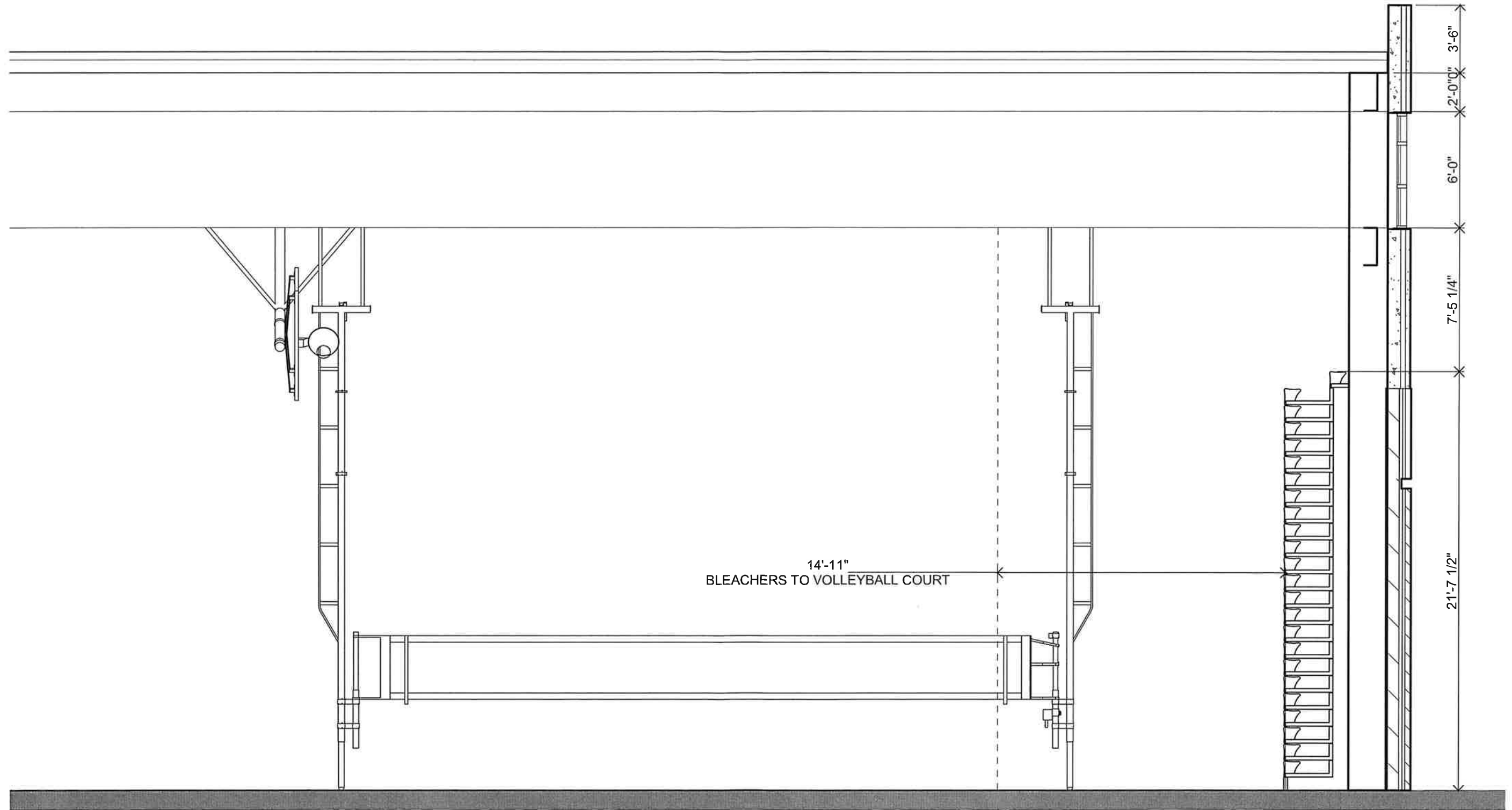




**BUILDING SECTION 2**

3/16" = 1'-0"





**BUILDING SECTION 3**

3/16" = 1'-0"





ELECTRICAL SYMBOL KEY

- ⊖ DUPLEX RECEPTACLE
- ⊖⊖ DOUBLE DUPLEX RECEPTACLE
- ⊖▽ SURFACE MOUNT DEVICES
- ⊖ SINGLE LIGHT SWITCH
- ⊖⊙ WALL OR CEILING PROJECTOR
- ⊖⊚ TV OUTLET (HIGH AND/OR LOW)
- ⊖ DATA OUTLET
- ⊖ FLOOR BOX (POWER AND DATA)

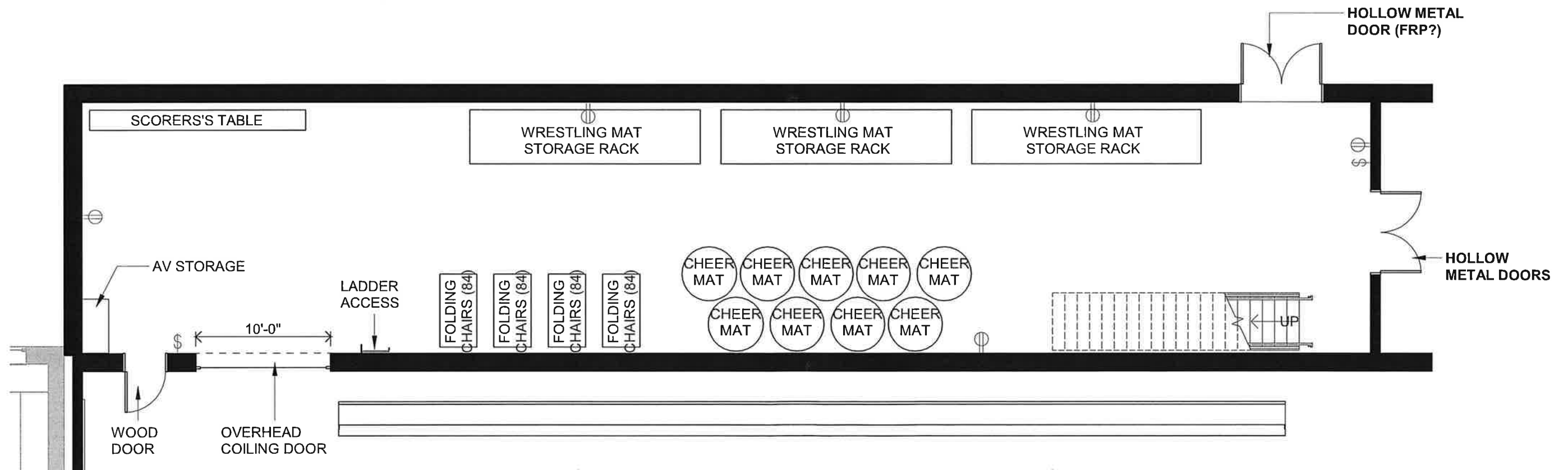
NOTES:

FINISHES:

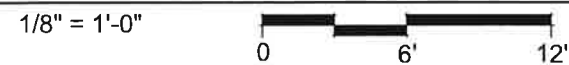
FLOORING- ~~VCT~~  
WALLS- PRECAST AND PAINT  
CEILING- PAINTED PRECAST PLANK  
LIGHTING- SURFACE MOUNTED

QUESTIONS:

- SHELVING?  
- AUDIO AND VISUAL EQUIPMENT  
STORED HERE?



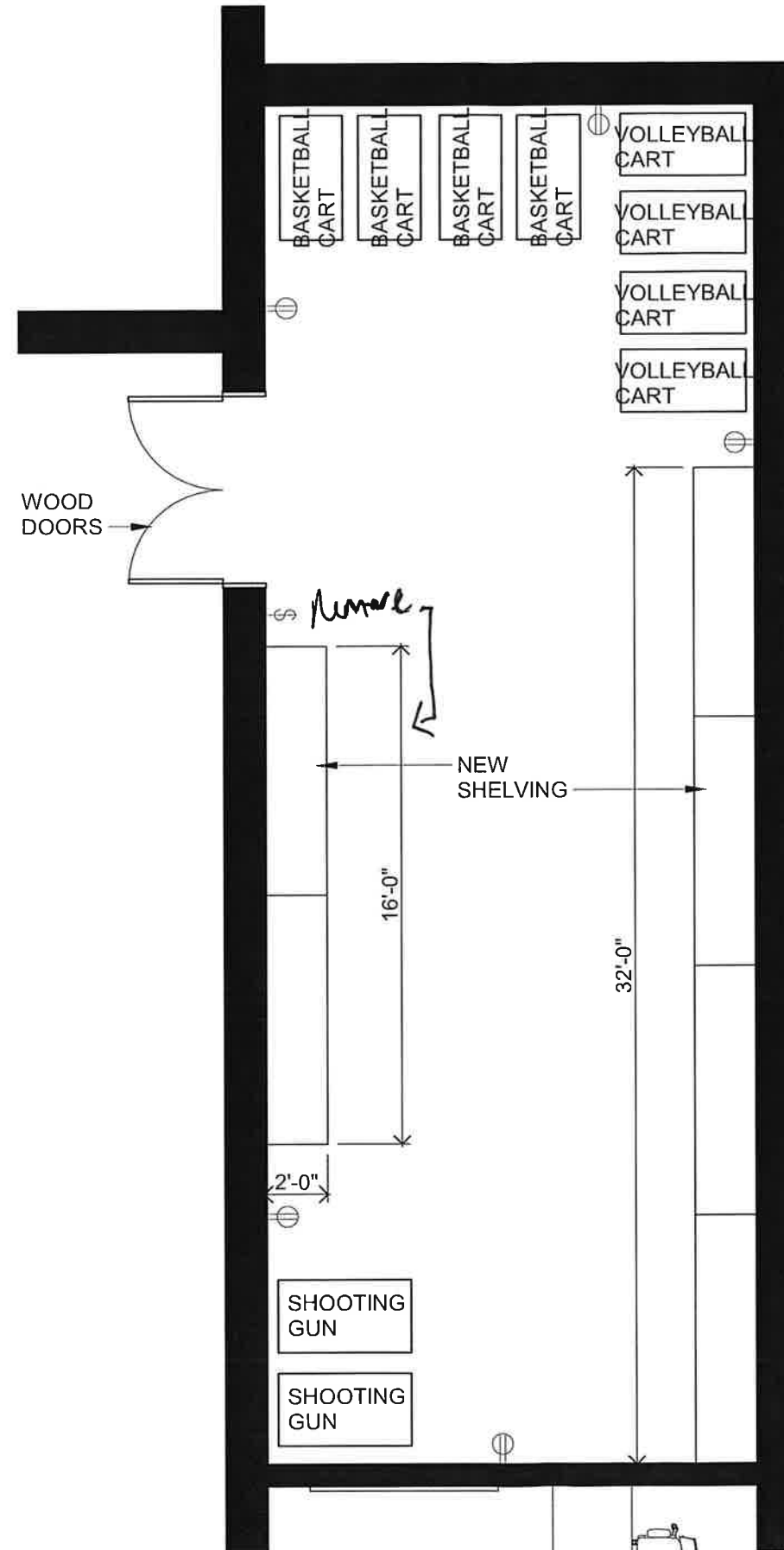
MAT AND LARGE EQUIPMENT STORAGE





# Seneca High School Gymnasium Addition

Seneca High School  
March 07, 2022



**NOTES:**

**FINISHES:**  
 FLOORING- VCT?  
 WALLS- PRECAST AND PAINT  
 CEILING- PAINTED PRECAST PLANK  
 LIGHTING- SURFACE MOUNTED

**QUESTIONS:**  
 - SHELVING? SIZE AND MATERIAL?  
*make it steel*

## ELECTRICAL SYMBOL KEY

- ⊕ DUPLEX RECEPTACLE
- ⊕⊕ DOUBLE DUPLEX RECEPTACLE
- ⊕ ▽ SURFACE MOUNT DEVICES
- ⊕ SINGLE LIGHT SWITCH
- ⊕⊕ WALL OR CEILING PROJECTOR
- ⊕⊕ TV OUTLET (HIGH AND/OR LOW)
- ◀ DATA OUTLET
- ⊕ FLOOR BOX (POWER AND DATA)

## PE STORAGE





# Seneca High School Gymnasium Addition

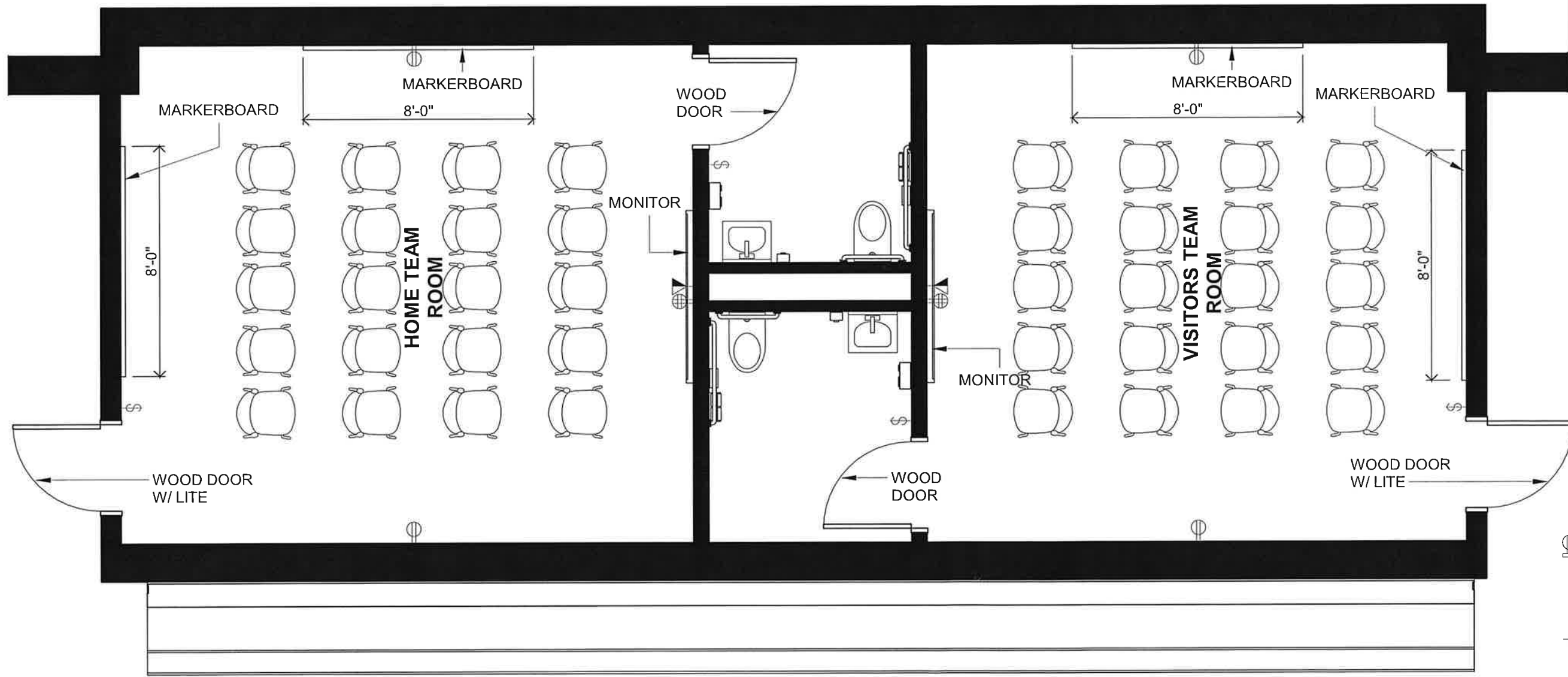
Seneca High School

March 07, 2022

**NOTES:**

**FINISHES:**  
 FLOORING- LVT  
 TOILET FLOORING- TILE  
 WALLS- PAINT  
 CEILING- ACT  
 LIGHTING- LED

**QUESTIONS:**  
 - TOILET ACCESSORIES?  
 - POWER NEEDS? OTHER DATA/  
 AV  
 - MONITOR SIZE?



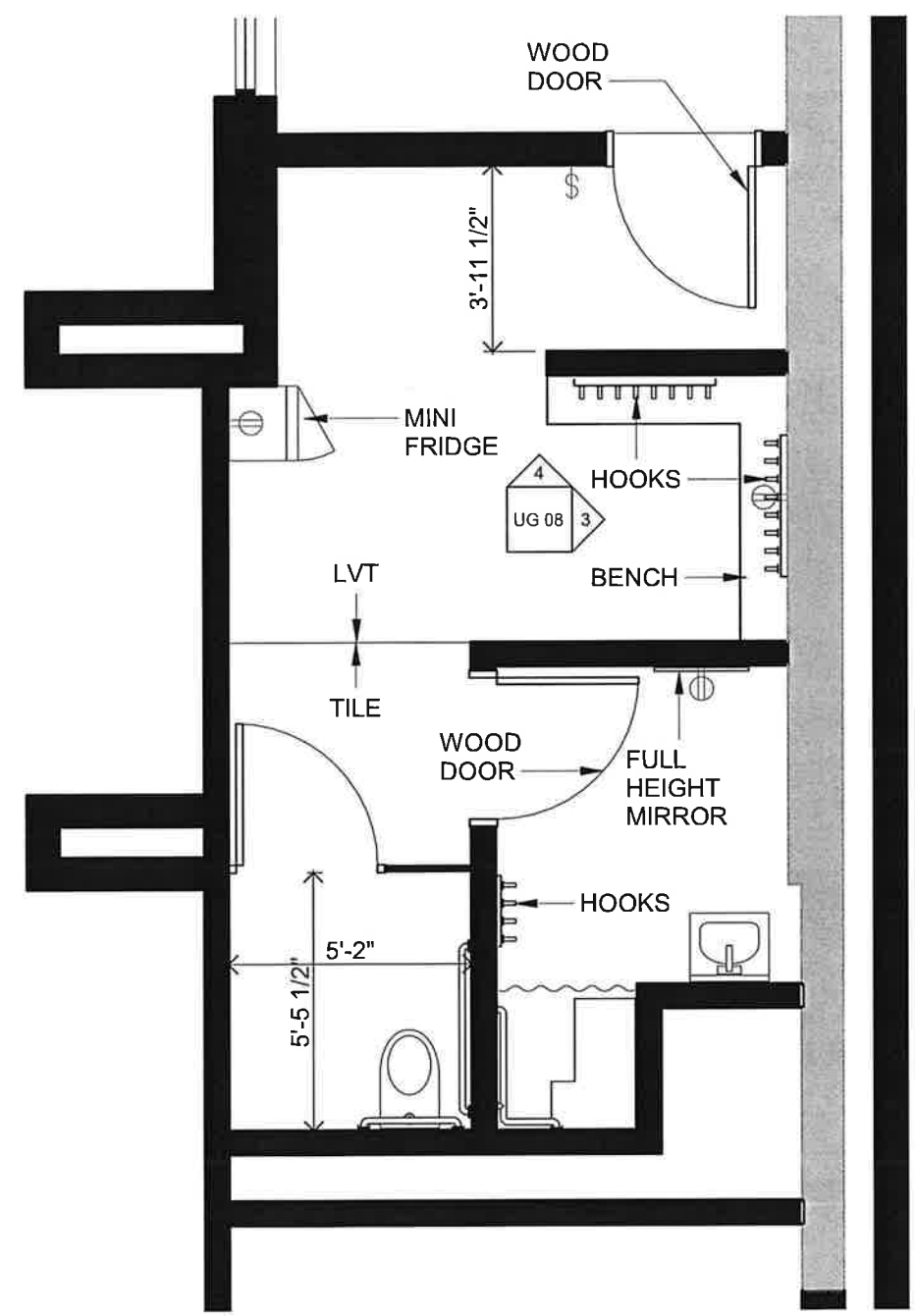
### ELECTRICAL SYMBOL KEY

- DUPLEX RECEPTACLE
- DOUBLE DUPLEX RECEPTACLE
- SURFACE MOUNT DEVICES
- SINGLE LIGHT SWITCH
- WALL OR CEILING PROJECTOR
- TV OUTLET (HIGH AND/OR LOW)
- DATA OUTLET
- FLOOR BOX (POWER AND DATA)

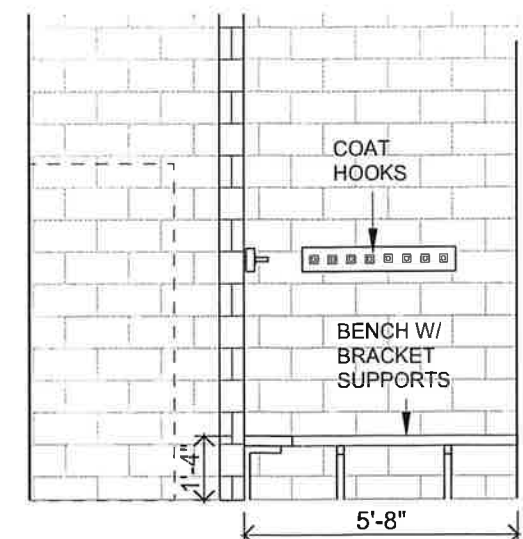
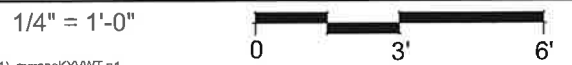
### TEAMS ROOMS



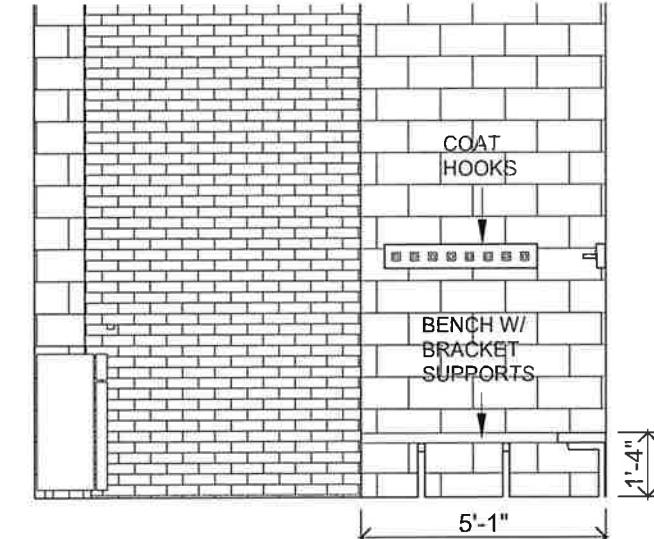




OFFICIALS ROOM



OFFICIALS ROOM ELEVATION



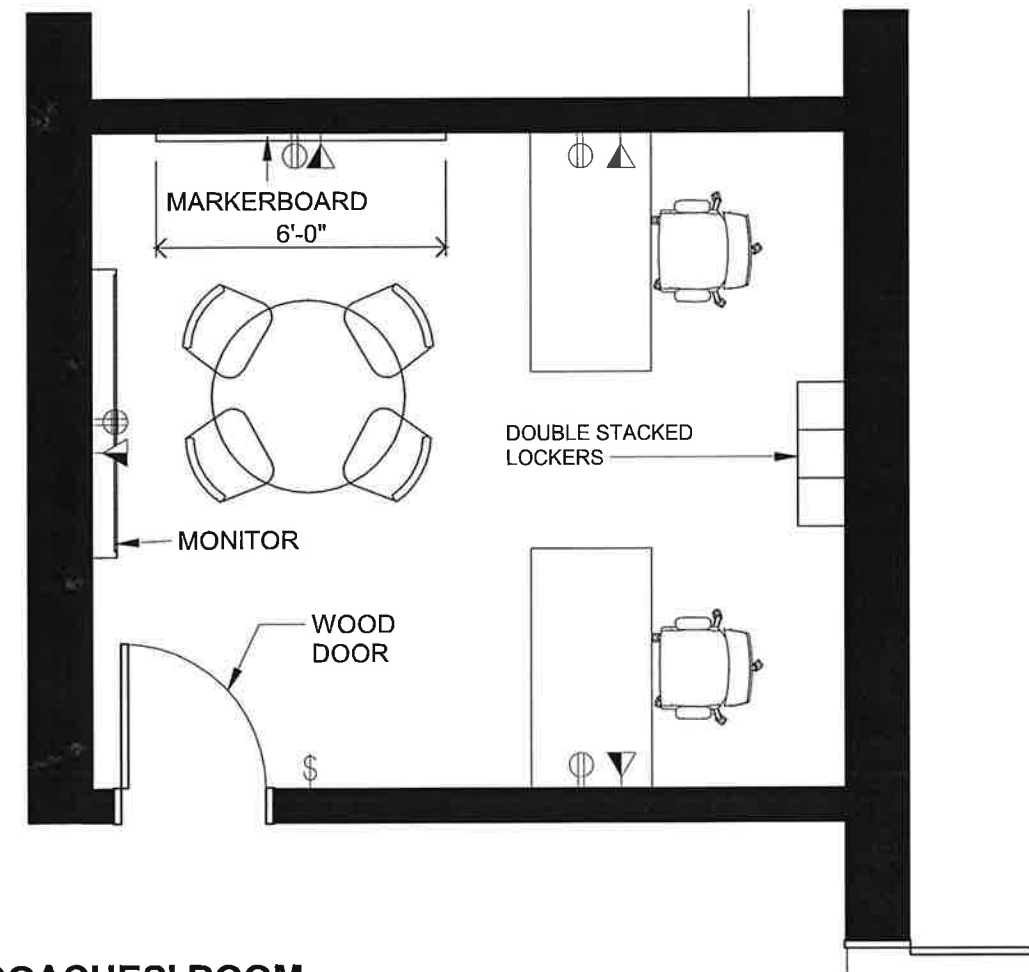
OFFICIALS ROOM ELEVATION 2



NOTES:

FINISHES:  
 OFFICIALS FLOORING- LVT/TILE  
 COACHES' FLOORING- LVT  
 WALLS- PAINT  
 CEILING- ACT  
 LIGHTING- LED

QUESTIONS:  
 - TOILET ACCESSORIES?



COACHES' ROOM





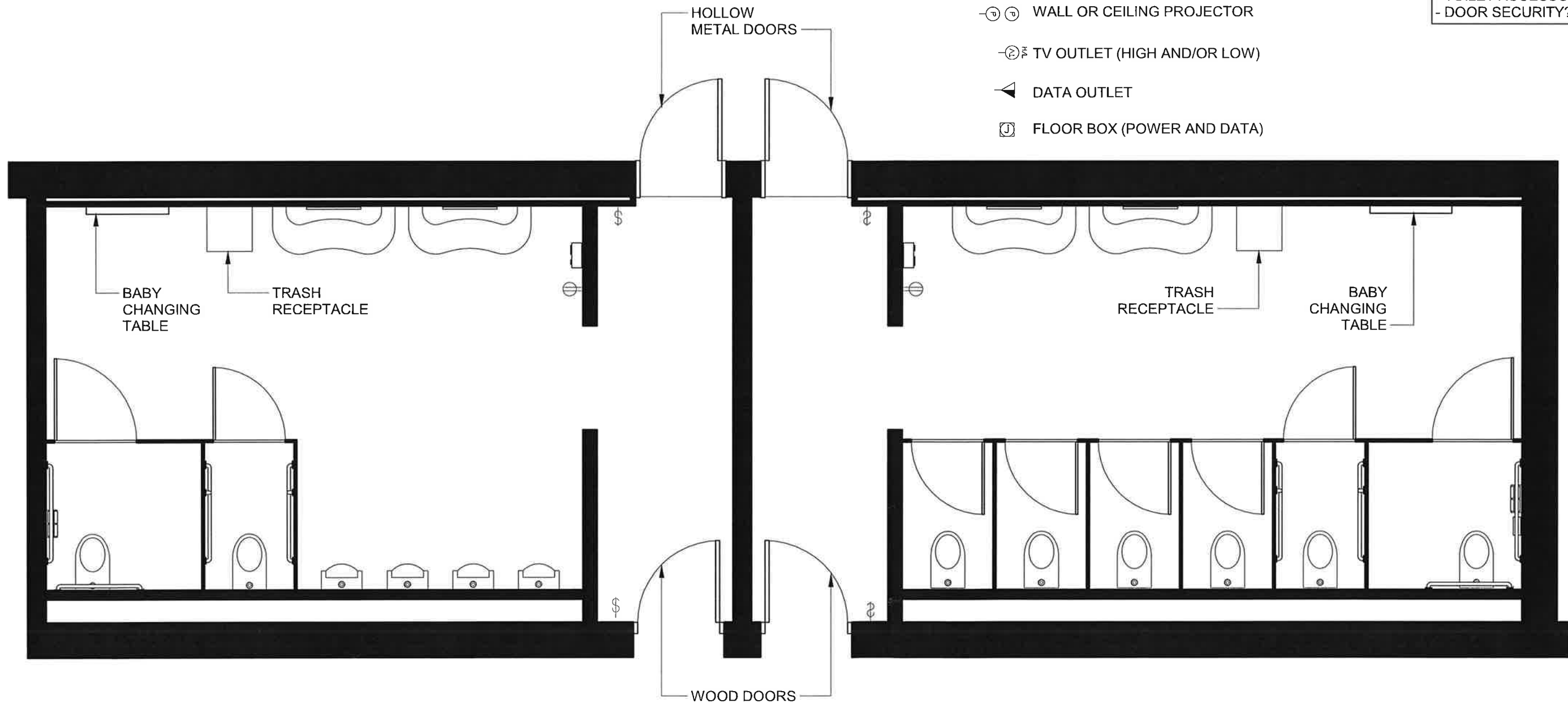
ELECTRICAL SYMBOL KEY

- DUPLEX RECEPTACLE
- DOUBLE DUPLEX RECEPTACLE
- SURFACE MOUNT DEVICES
- SINGLE LIGHT SWITCH
- WALL OR CEILING PROJECTOR
- TV OUTLET (HIGH AND/OR LOW)
- DATA OUTLET
- FLOOR BOX (POWER AND DATA)

**NOTES:**  
PORCELAIN FIXTURES

**FINISHES:**  
FLOORING- EPOXY RESIN OR TILE?  
WALLS- PAINT/TILE  
CEILING- GYP/VINYL ACT?  
LIGHTING- SURFACE MOUNTED OR RECESSED?

**QUESTIONS:**  
- TOILET ACCESSORIES?  
- DOOR SECURITY?

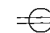
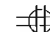

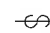
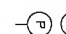
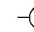




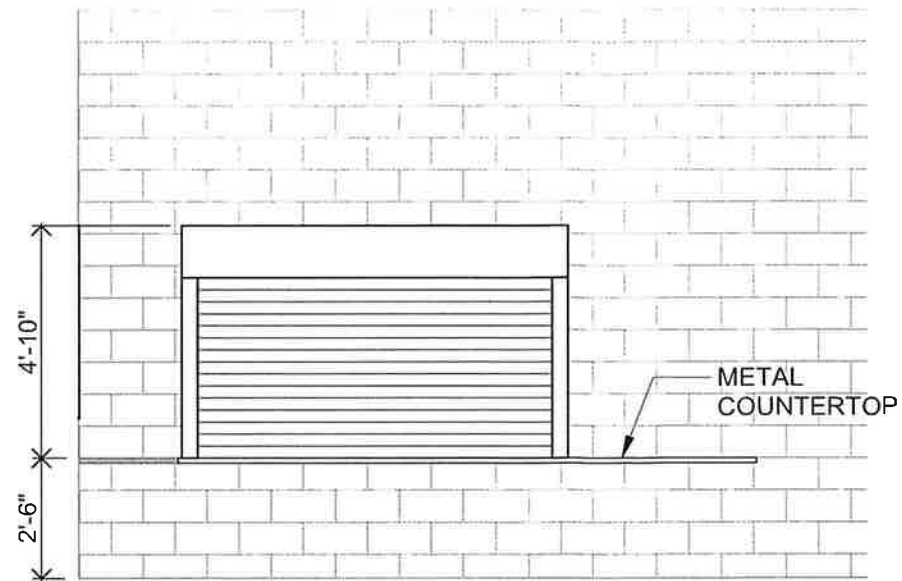
TOILET ROOMS



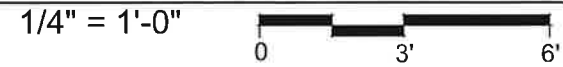


### ELECTRICAL SYMBOL KEY

-  DUPLEX RECEPTACLE
-  DOUBLE DUPLEX RECEPTACLE
-  SURFACE MOUNT DEVICES
-  SINGLE LIGHT SWITCH
-  WALL OR CEILING PROJECTOR
-  TV OUTLET (HIGH AND/OR LOW)
-  DATA OUTLET
-  FLOOR BOX (POWER AND DATA)



### OVERHEAD DOOR AT COUNTERTOP



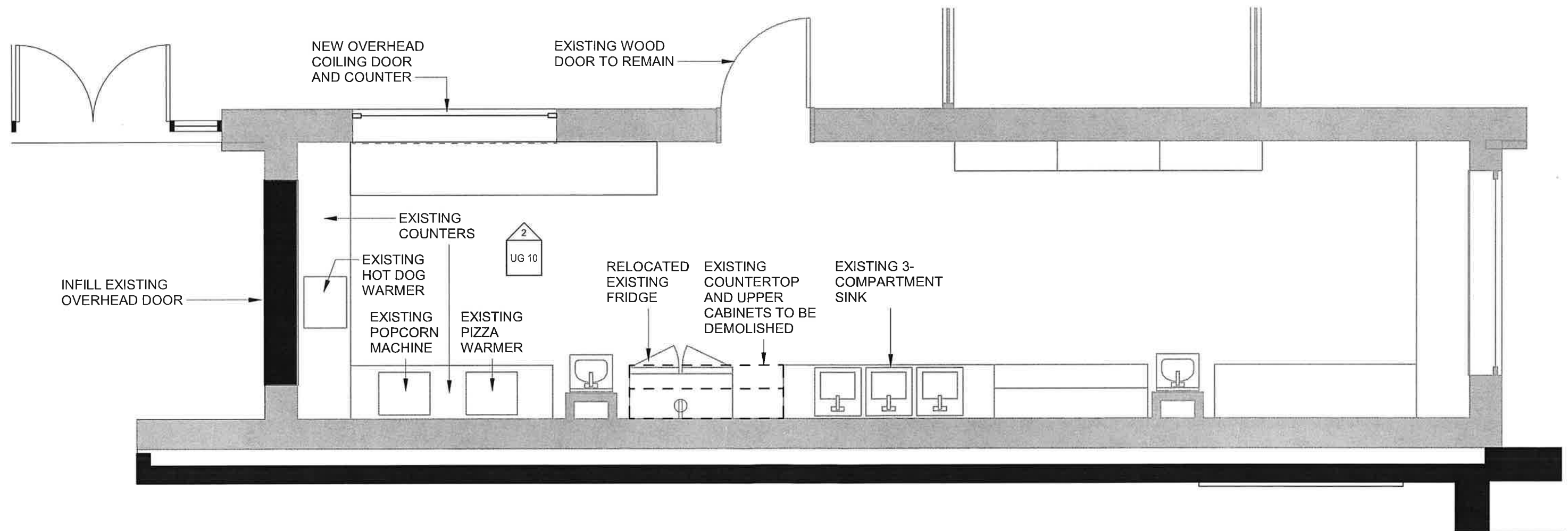
## Seneca High School Gymnasium Addition

Seneca High School  
March 07, 2022

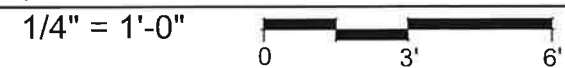
**NOTES:**

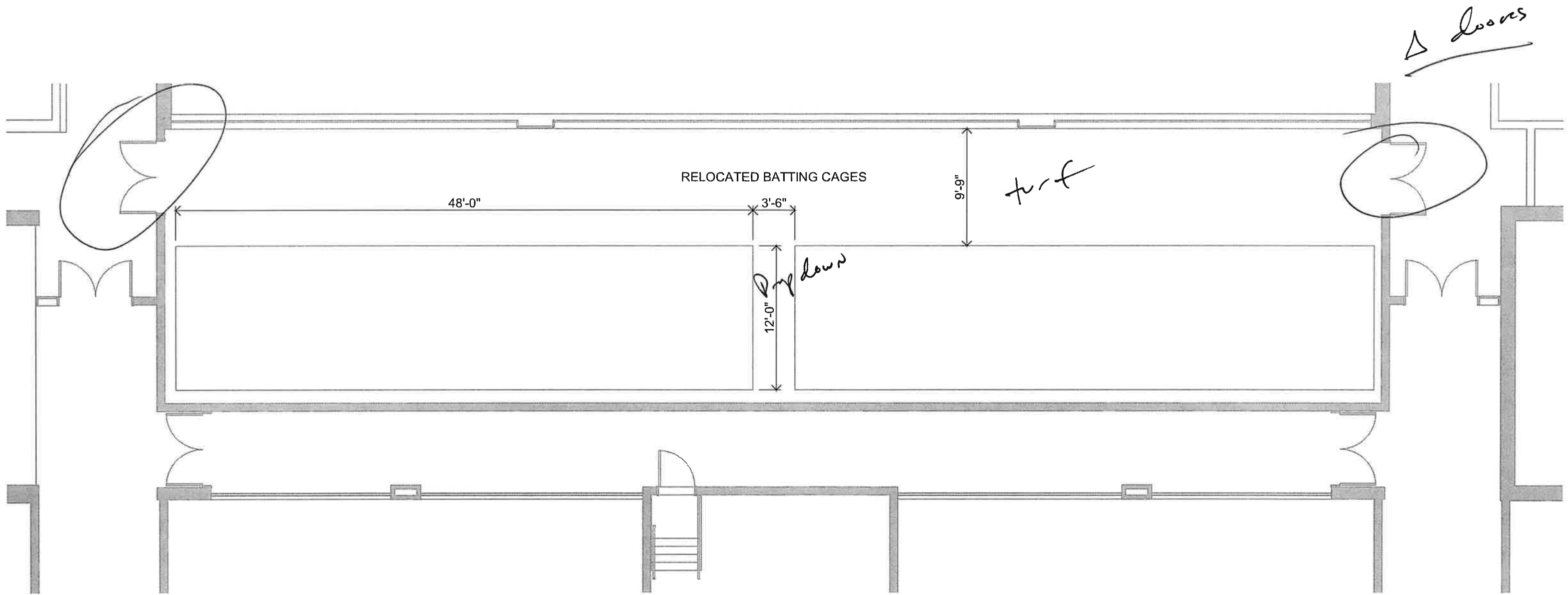
**FINISHES:**  
 FLOORING- EXISTING EPOXY  
 WALLS- PAINT  
 CEILING- ACT  
 LIGHTING- EXISTING RECESSED

**QUESTIONS:**  
 - APPLIANCES?



### CONCESSIONS





**GYM MEZZANINE**

1/8" = 1'-0"

