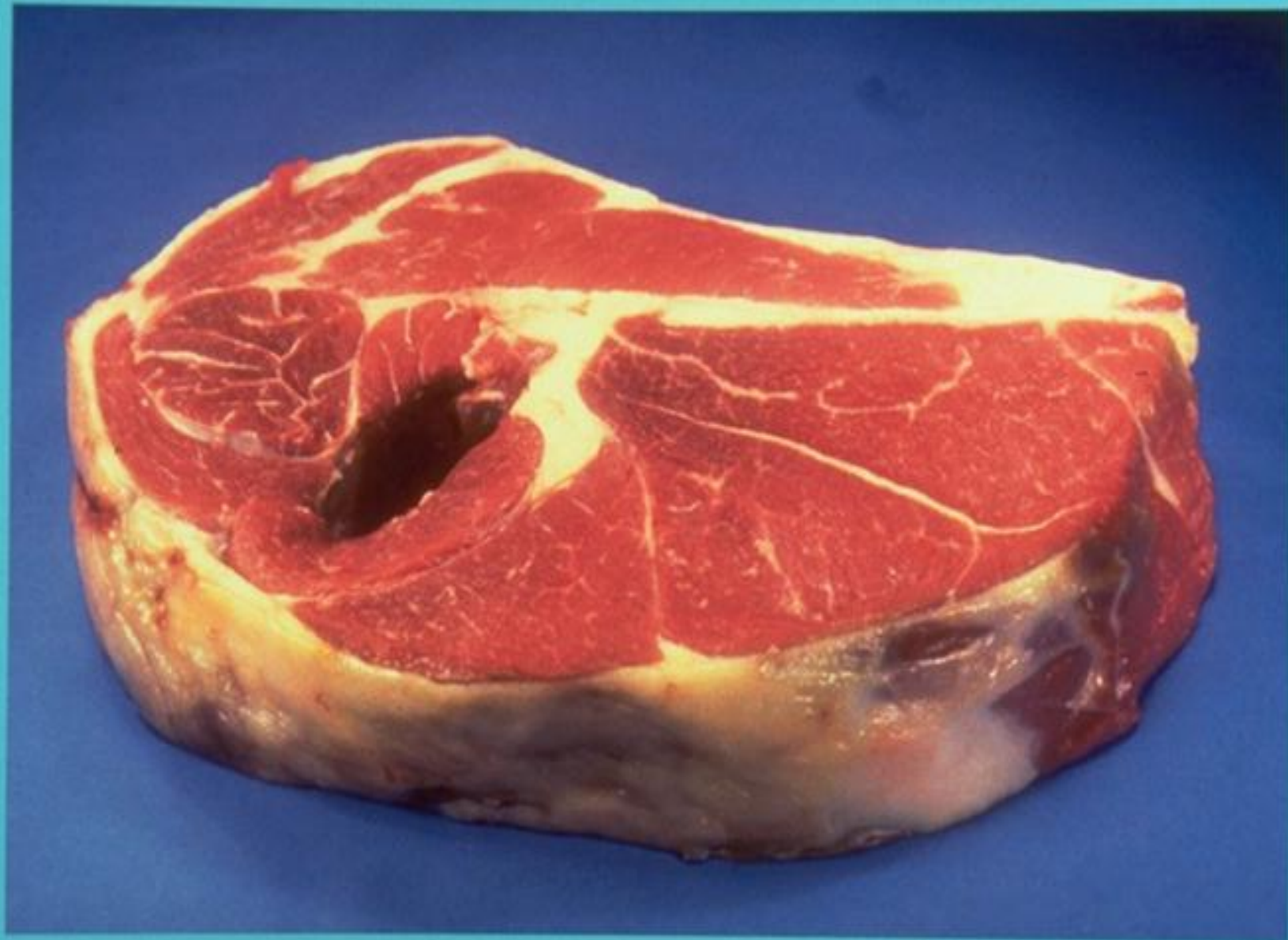
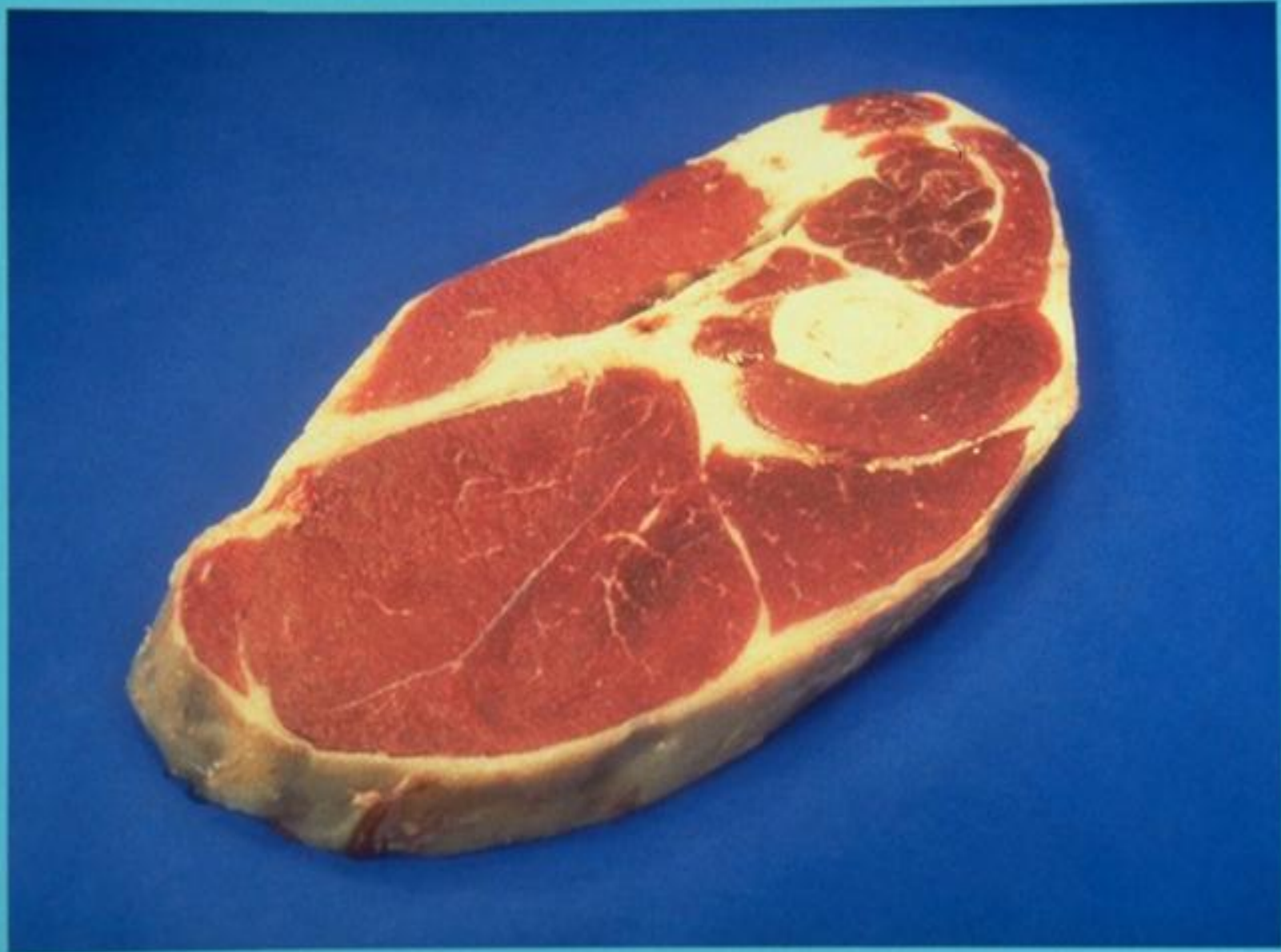




Chuck Arm Roast



Chuck Arm Roast (Boneless)



Chuck Arm Steak



Chuck Arm Steak (Boneless)



Chuck Blade Roast



Chuck Blade Steak



Chuck Eye Roast (Boneless)

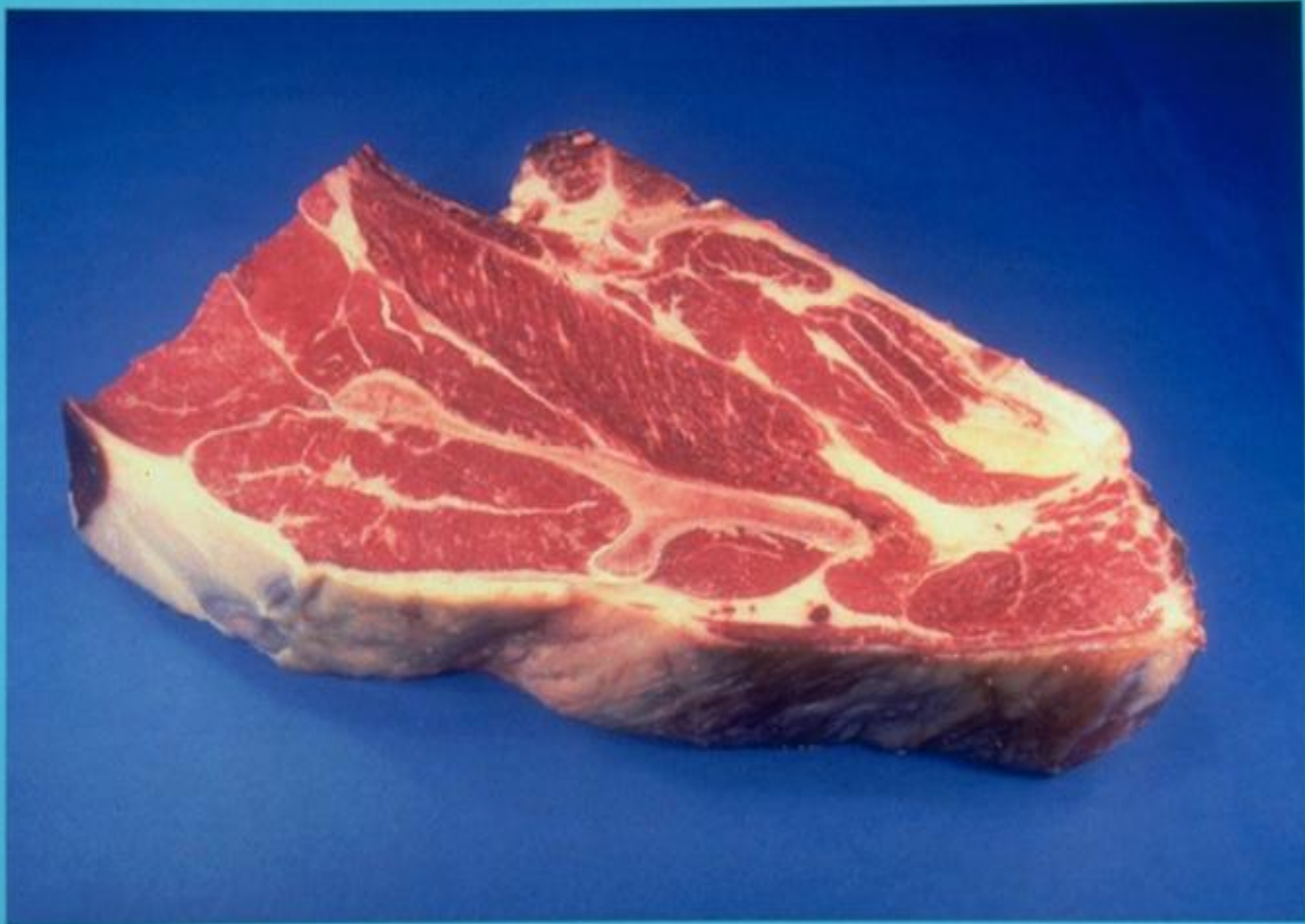


Chuck Mock Tender Roast





Chuck Mock Tender Steak



Chuck Seven Bone Roast



Chuck Seven Bone Steak



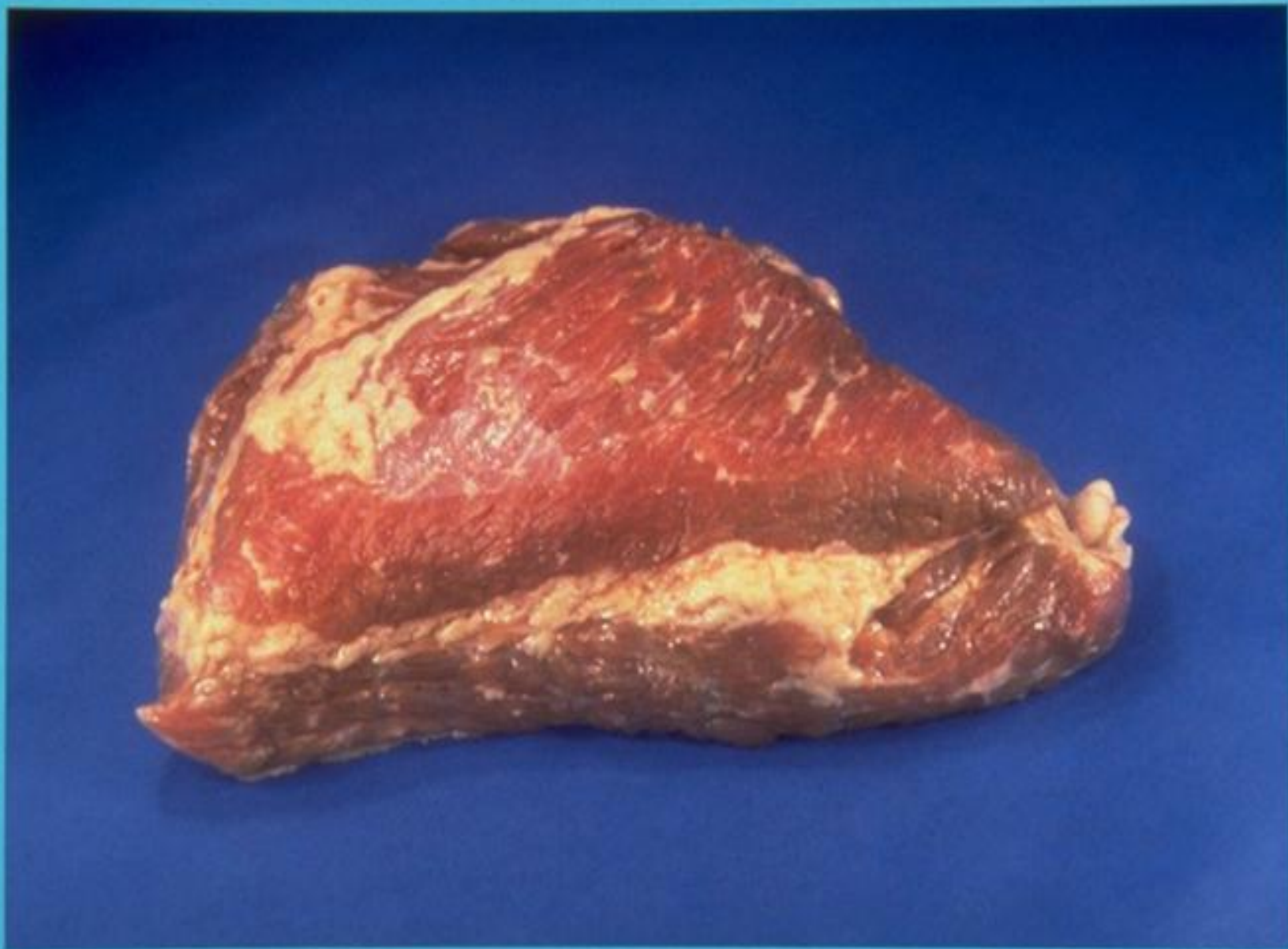
Shank Cross Cut



Shank Cross Cut (Boneless)



Brisket (Boneless, Whole)



Brisket Corned (Boneless)



Brisket Flat Half (Boneless)





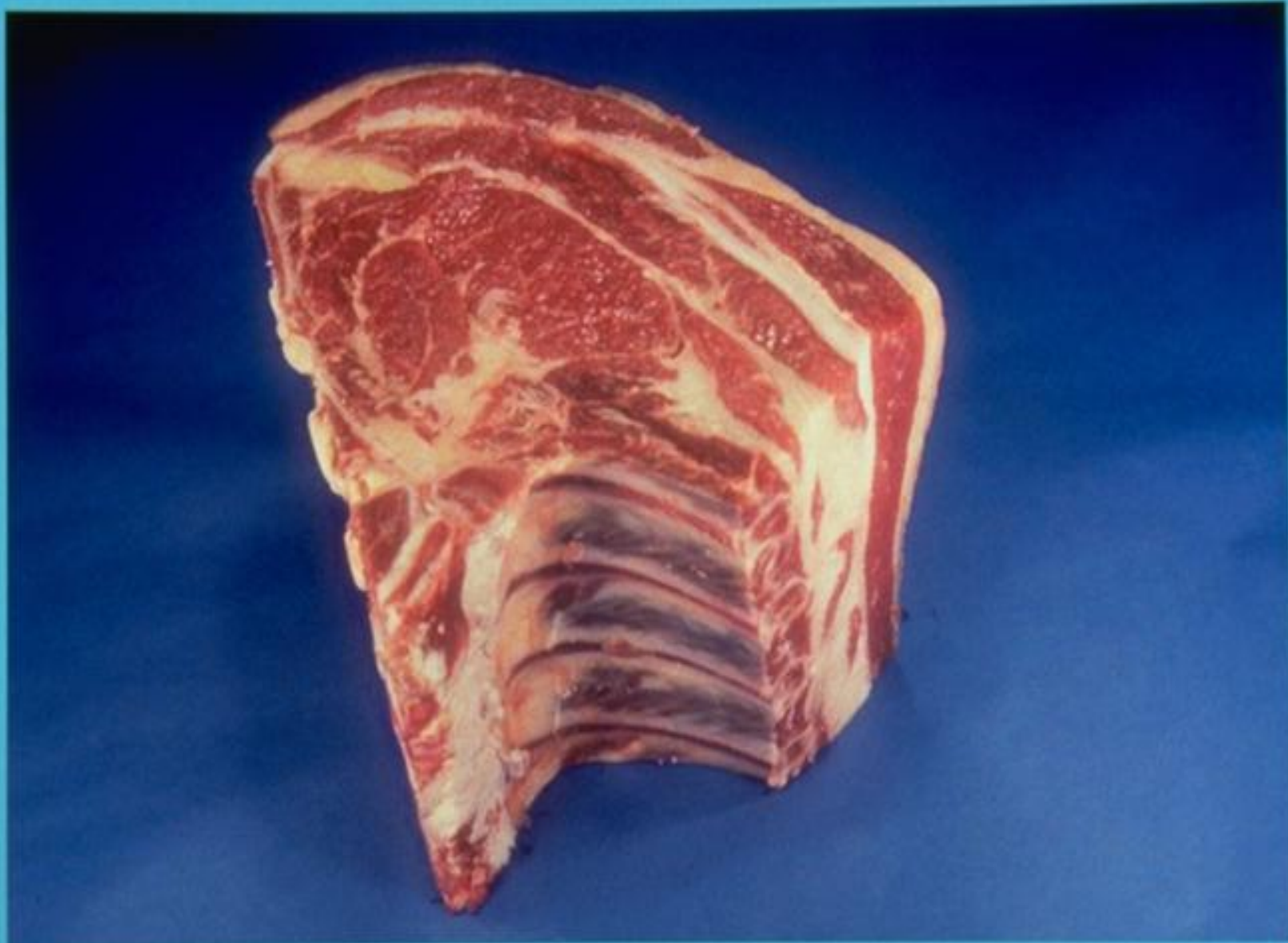
Brisket Point Half (Boneless)



Rib Eye Roast



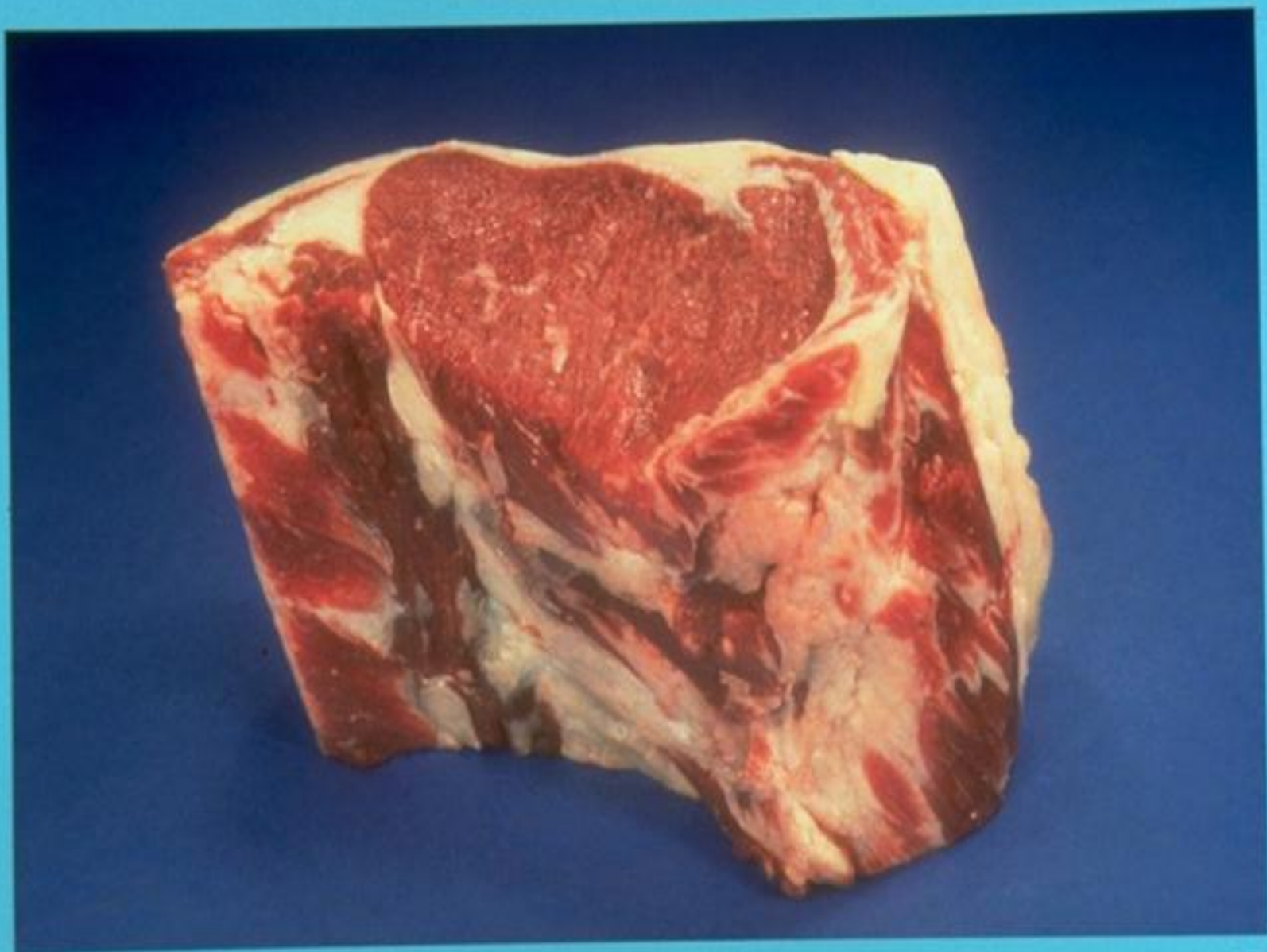
Rib Eye Steak



Rib Roast Large End



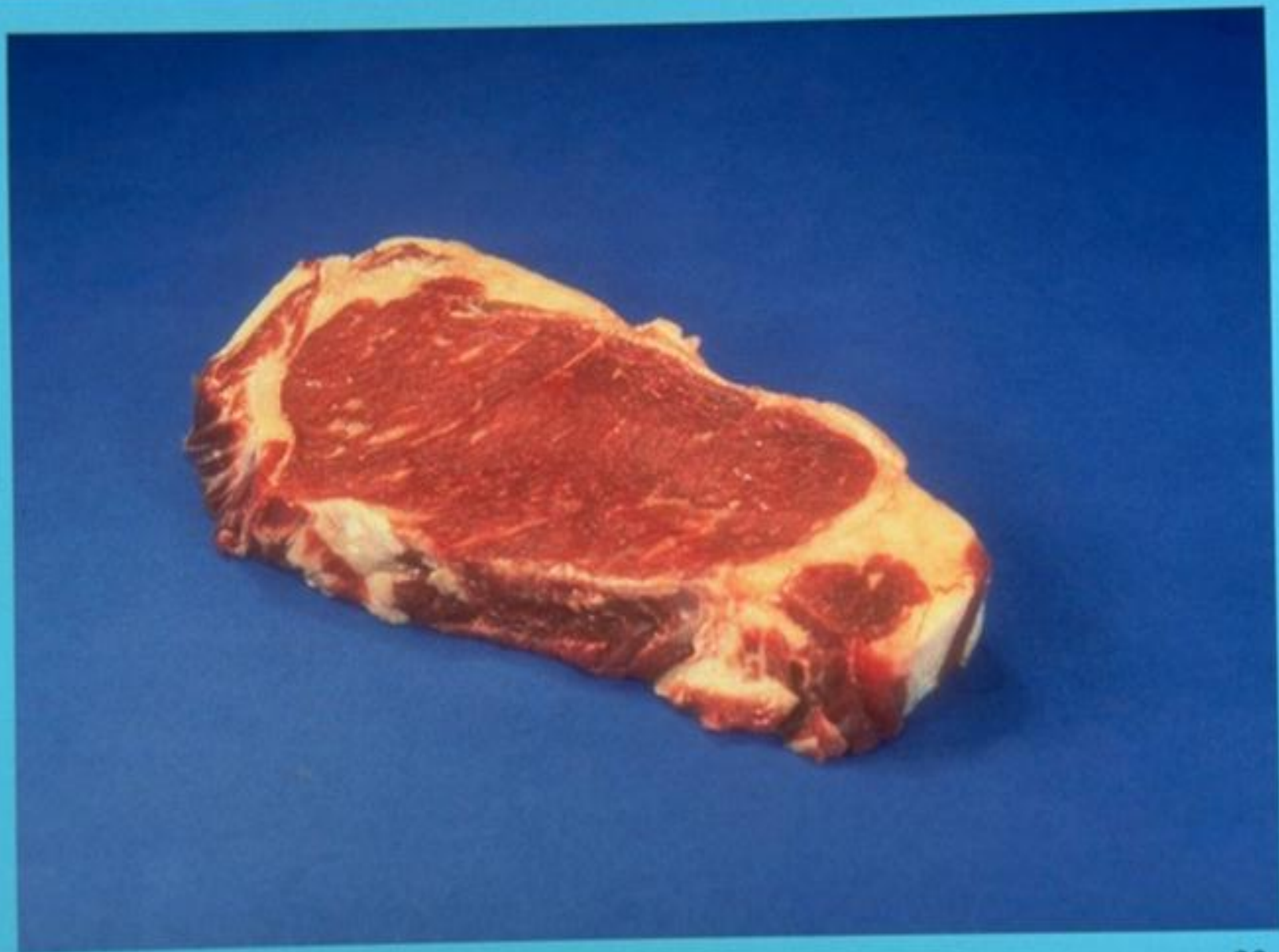
Rib Roast Small End



Rib Roast Small End (Boneless)



Rib Steak Small End

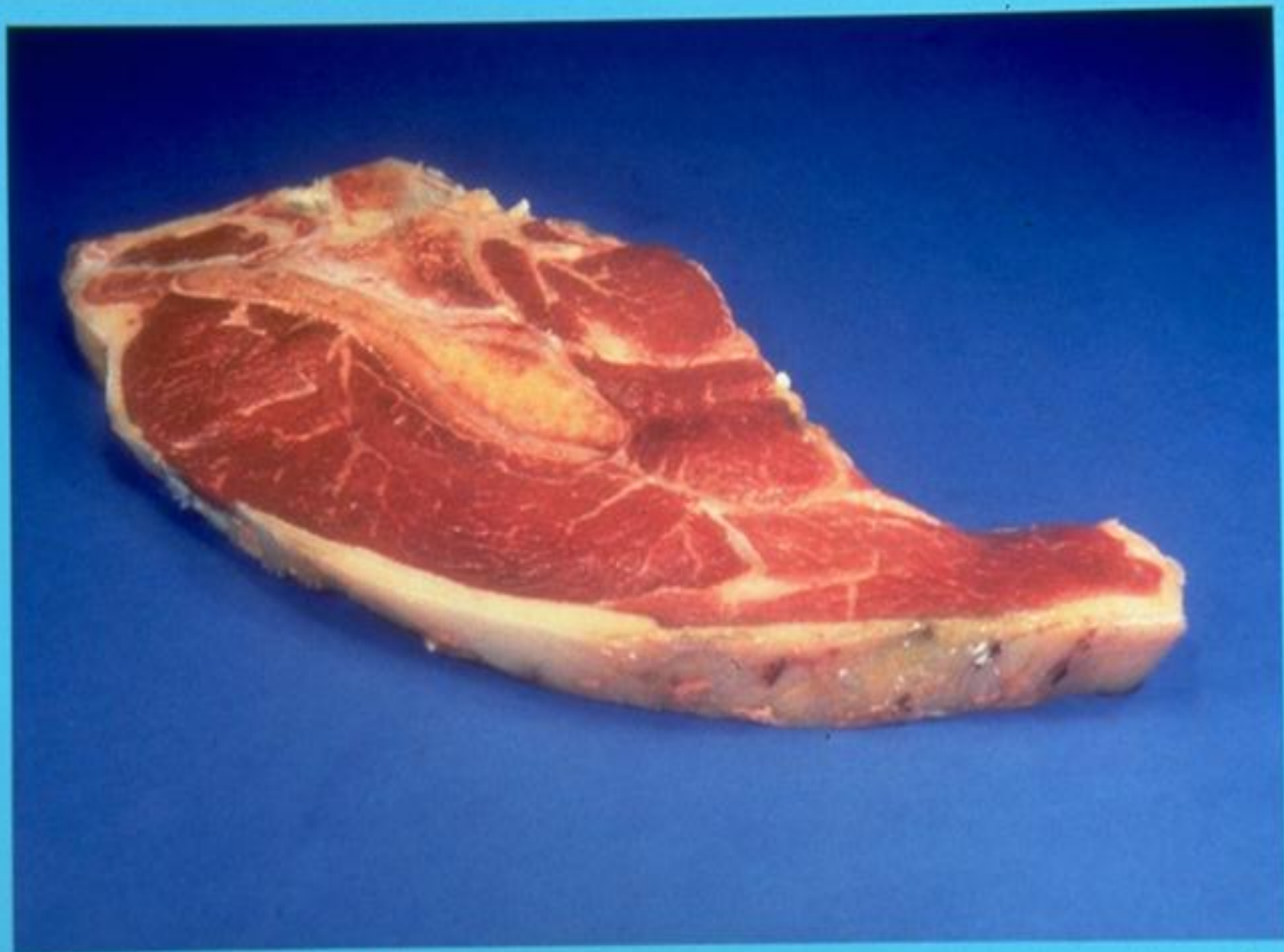


Rib Steak Small End (Boneless)





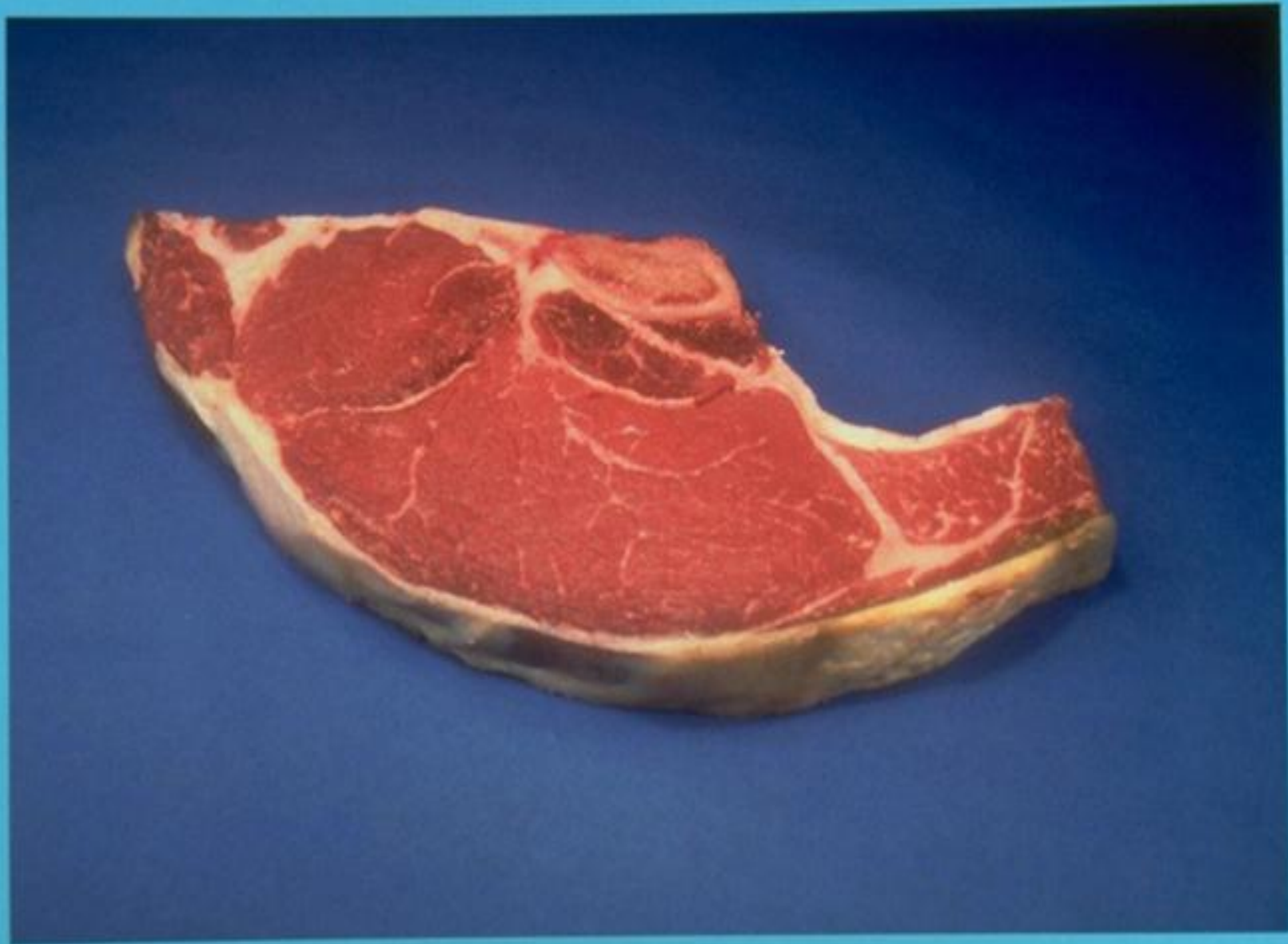
Loin Sirloin Steak, Pin Bone



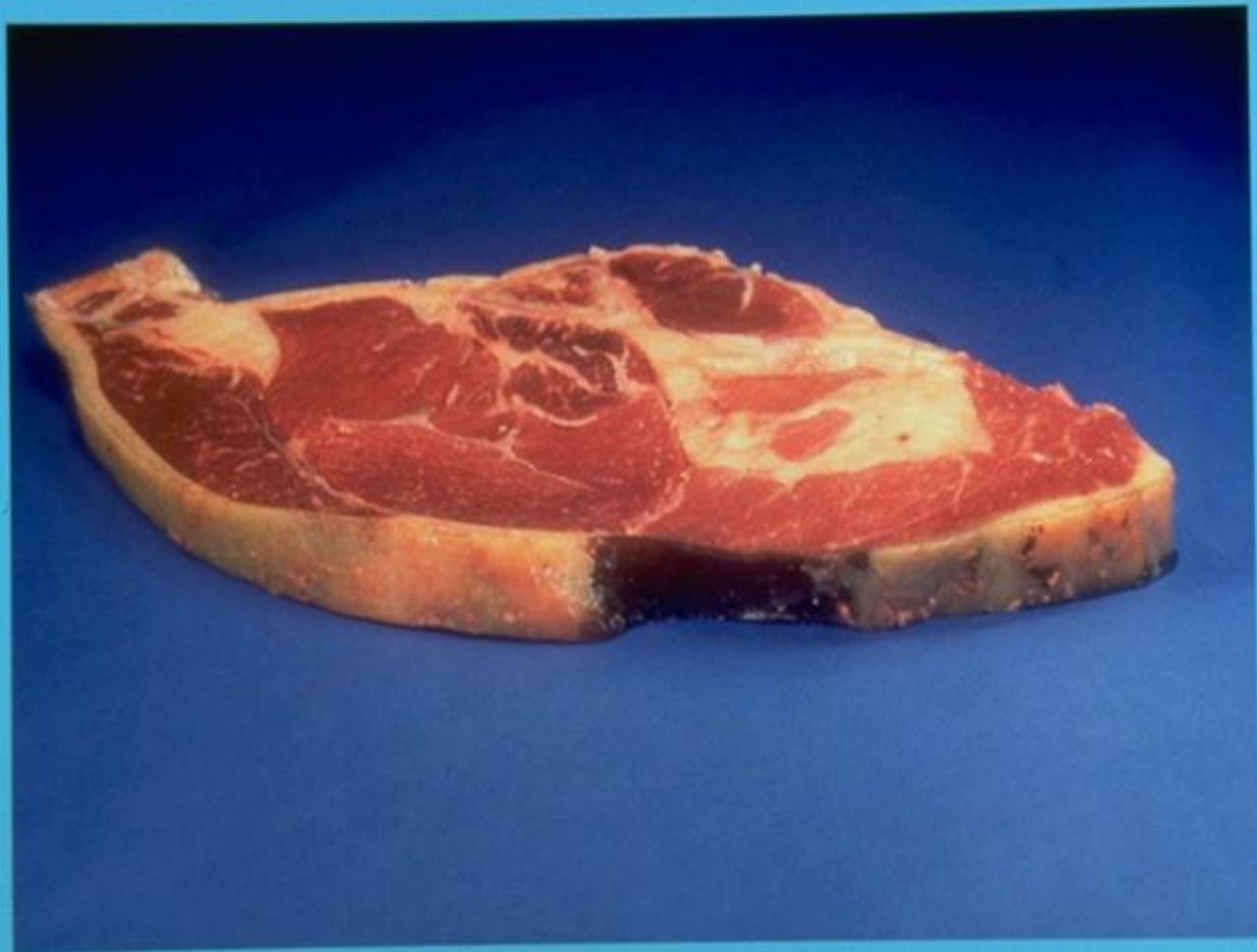
Loin Sirloin Steak, Flat Bone



Loin Sirloin Steak, Round Bone



Loin Sirloin Steak, Shell



Loin Sirloin Steak, Wedge Bone



Plate Short Ribs



Plate Skirt Steak (Boneless)



Loin Porterhouse Steak

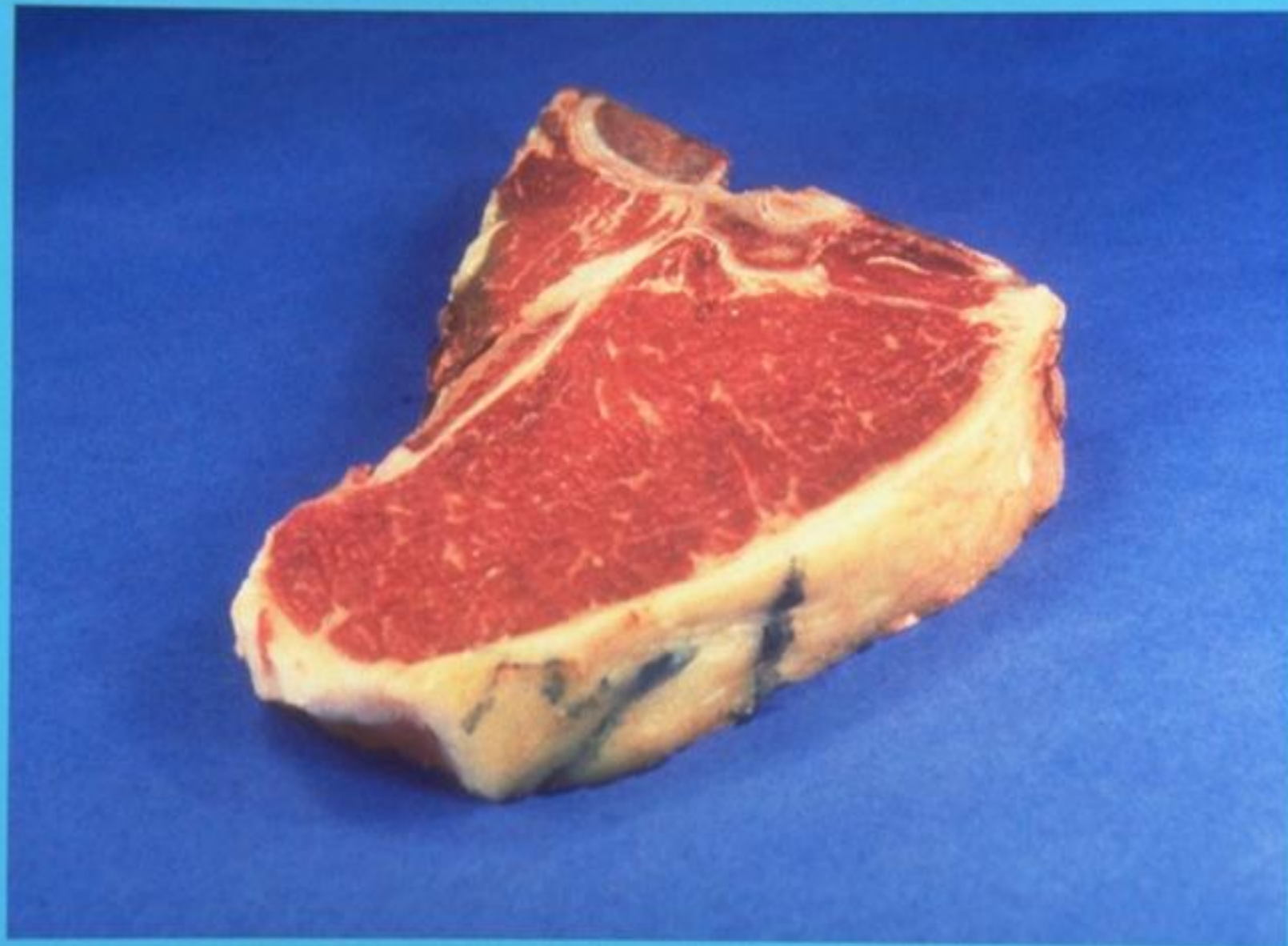




Loin Sirloin Steak (Boneless)



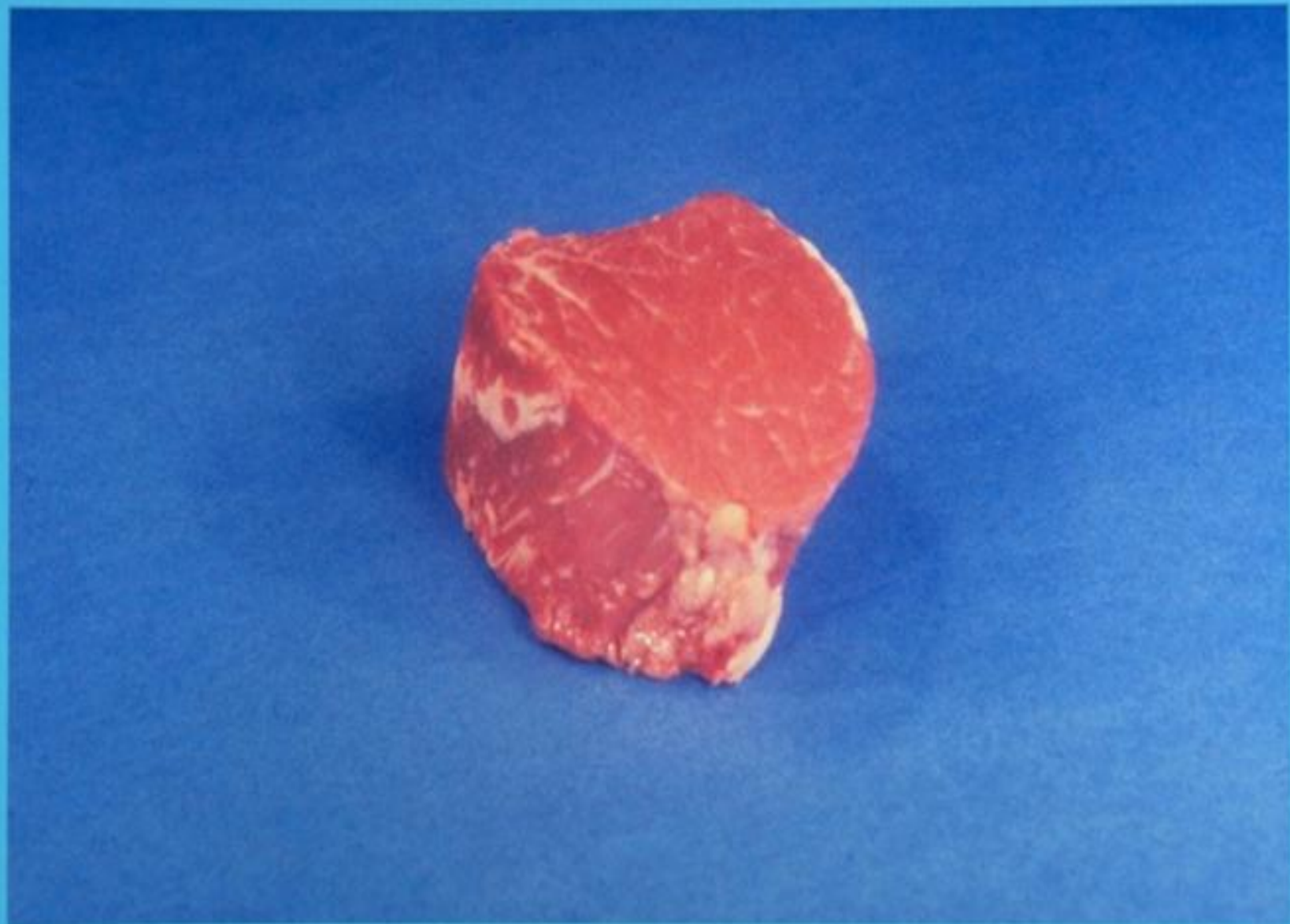
Loin Top Sirloin Steak (Boneless)



Loin T-Bone Steak



Loin Tenderloin Roast (Whole)



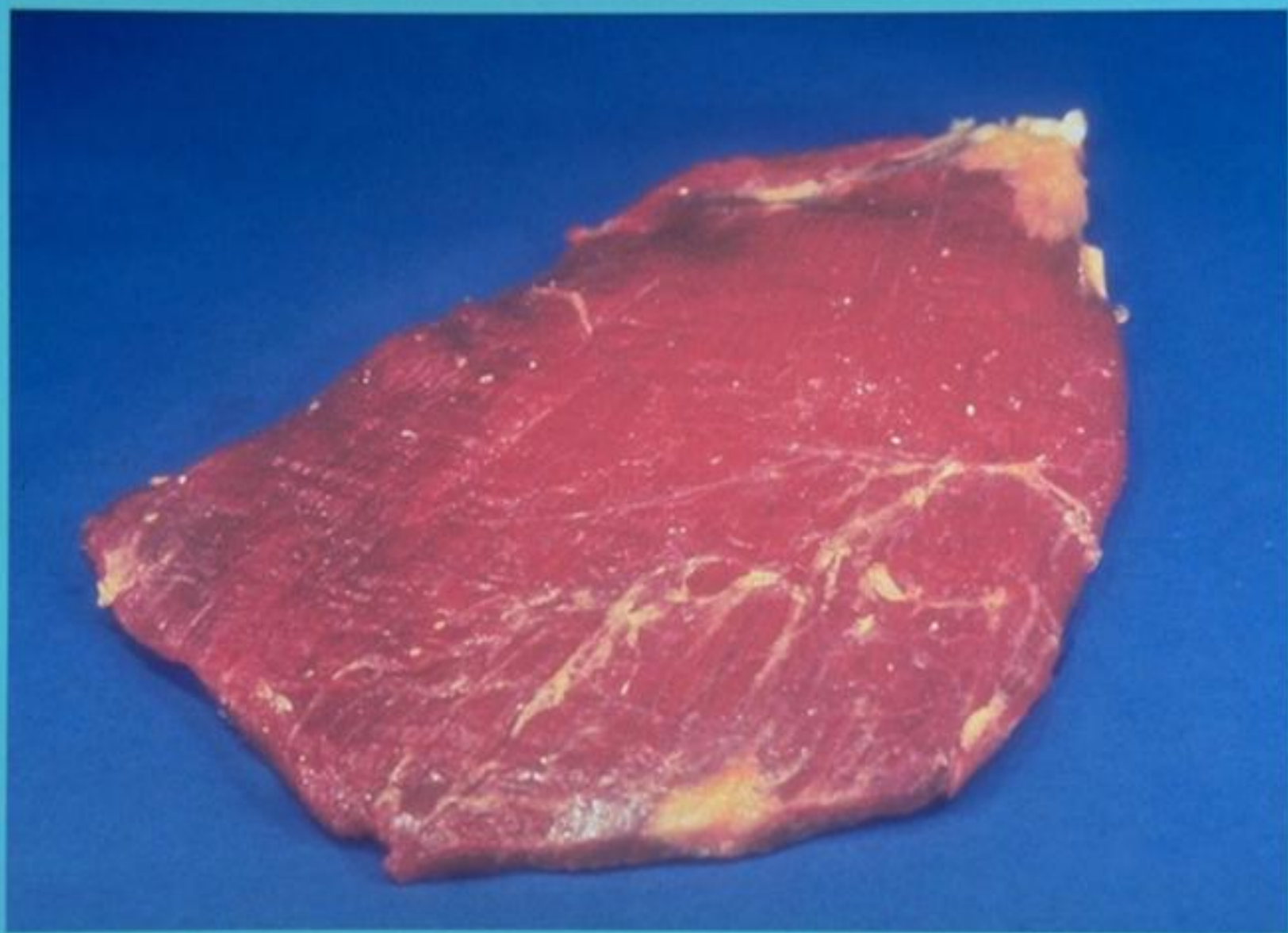
Loin Tenderloin Steak



Loin Top Loin Steak



Loin Top Loin Steak (Boneless)



Flank Steak

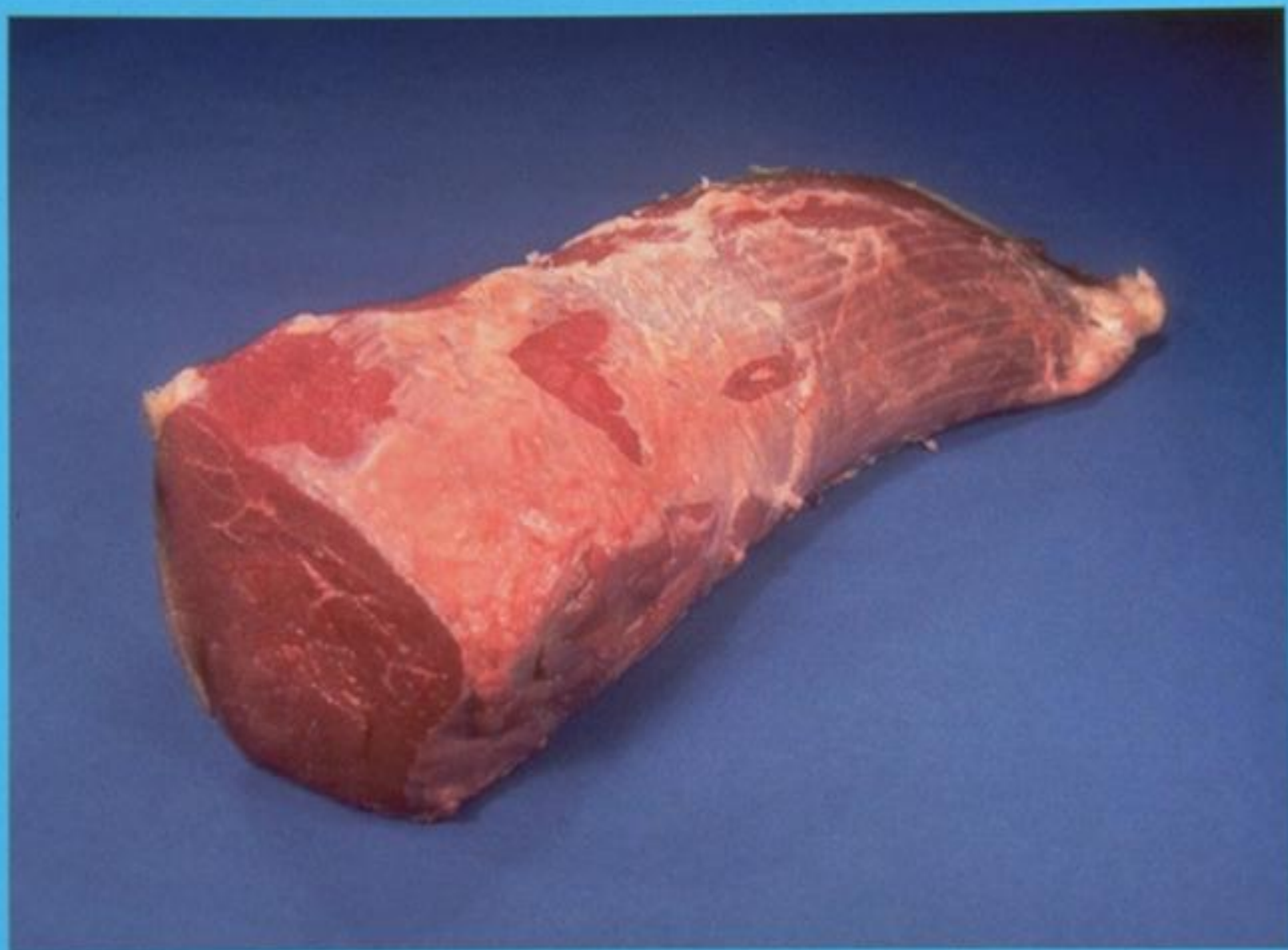




Round Bottom Round Roast



Round Bottom Round Steak



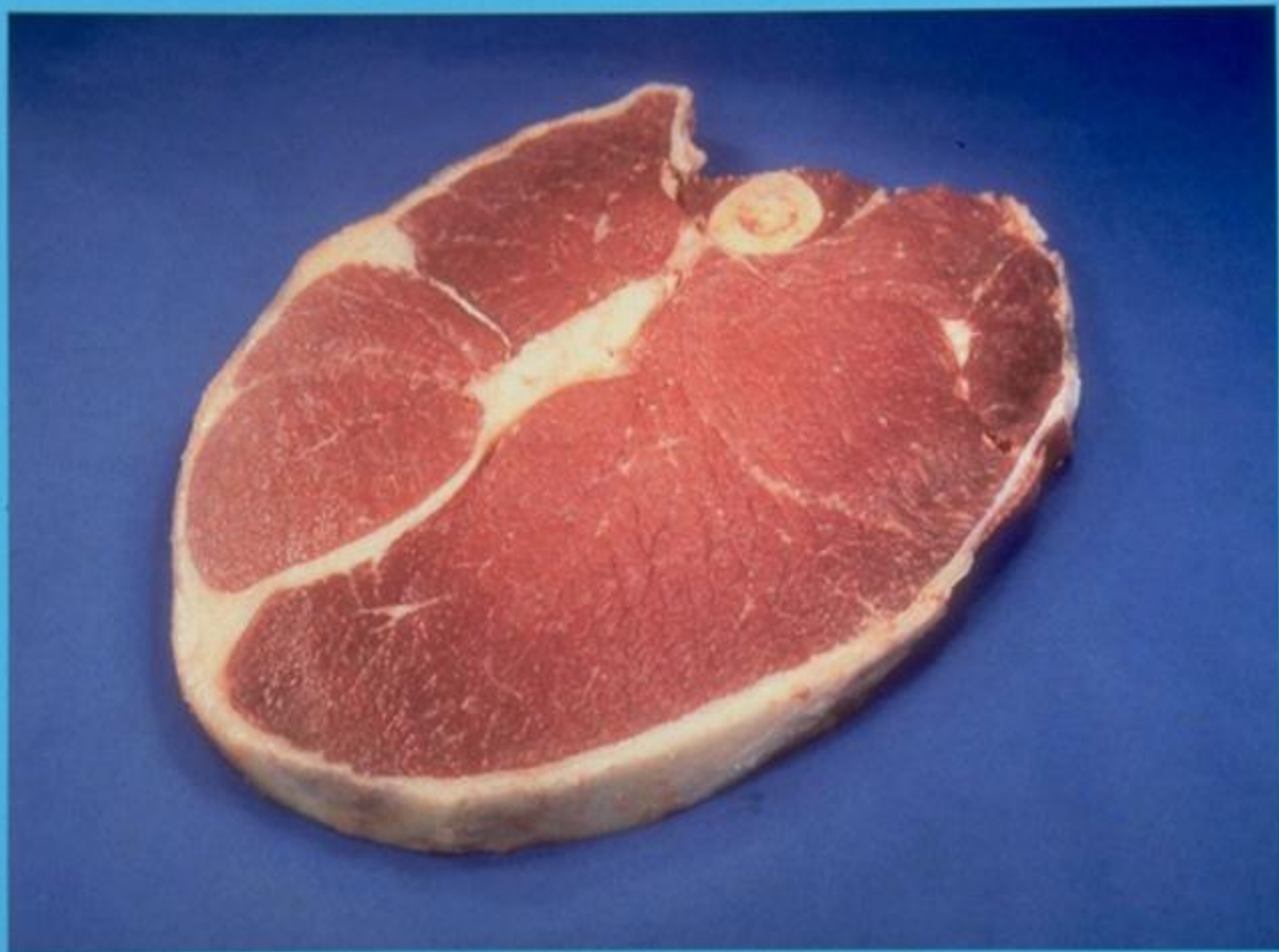
Round Eye Round Roast



Round Eye Round Steak



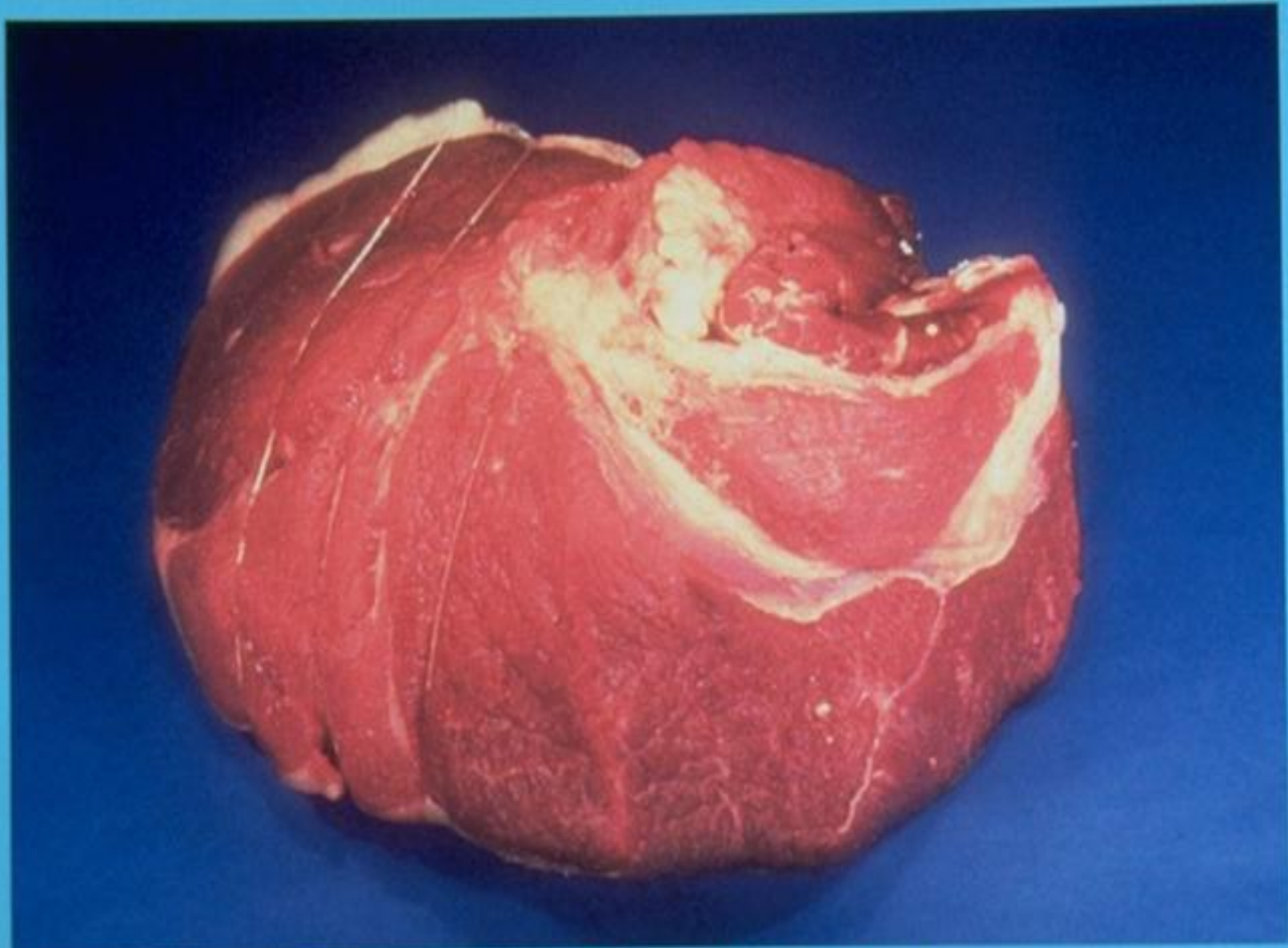
Round Heel of Round Roast



Round Steak



Round Steak (Boneless)



~~Round Rump Roast (Boneless)~~ Round Rump Roast (Boneless)





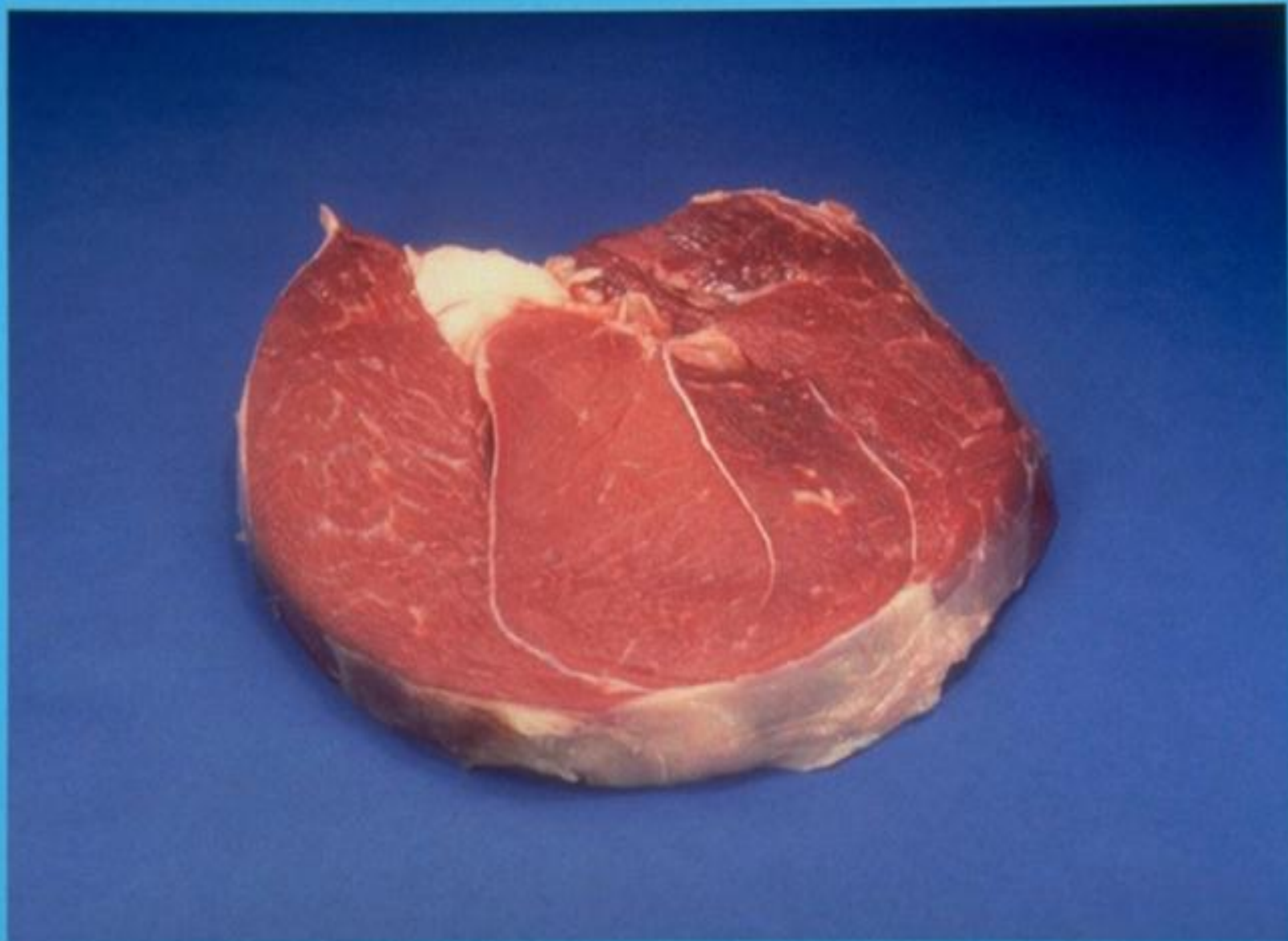
Round Tip Roast



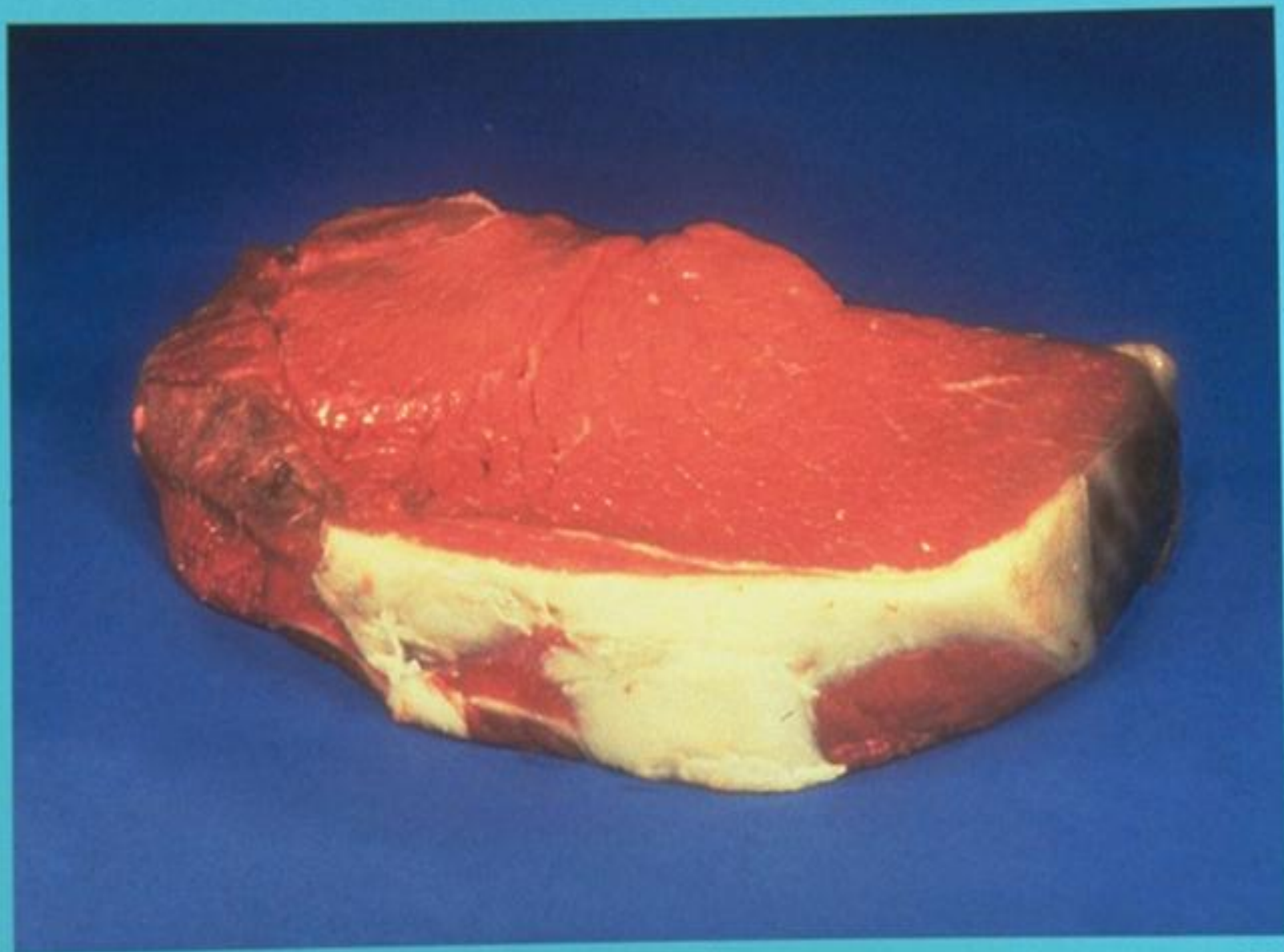
Round Tip Steak



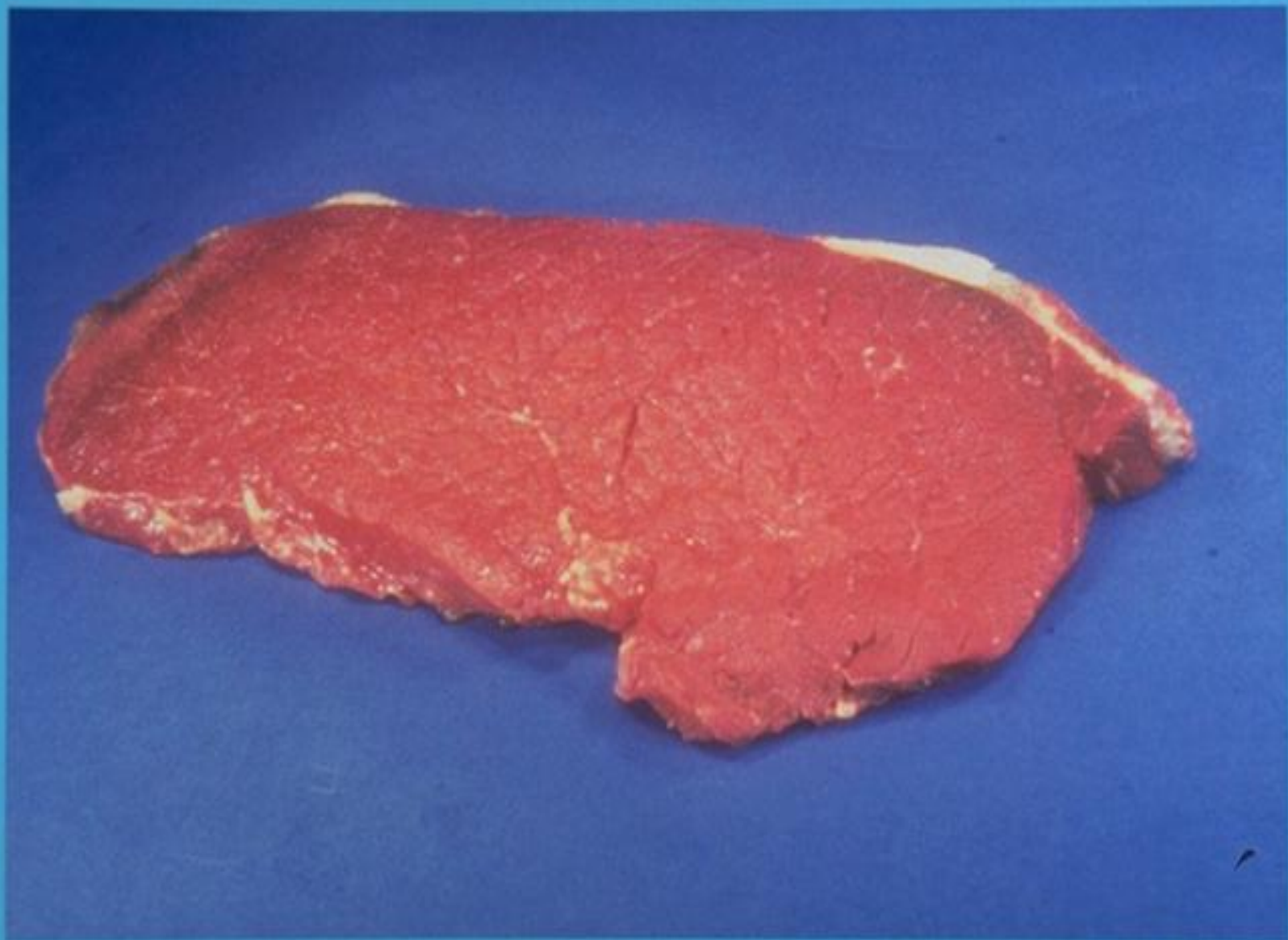
Round Tip Roast Cap Off



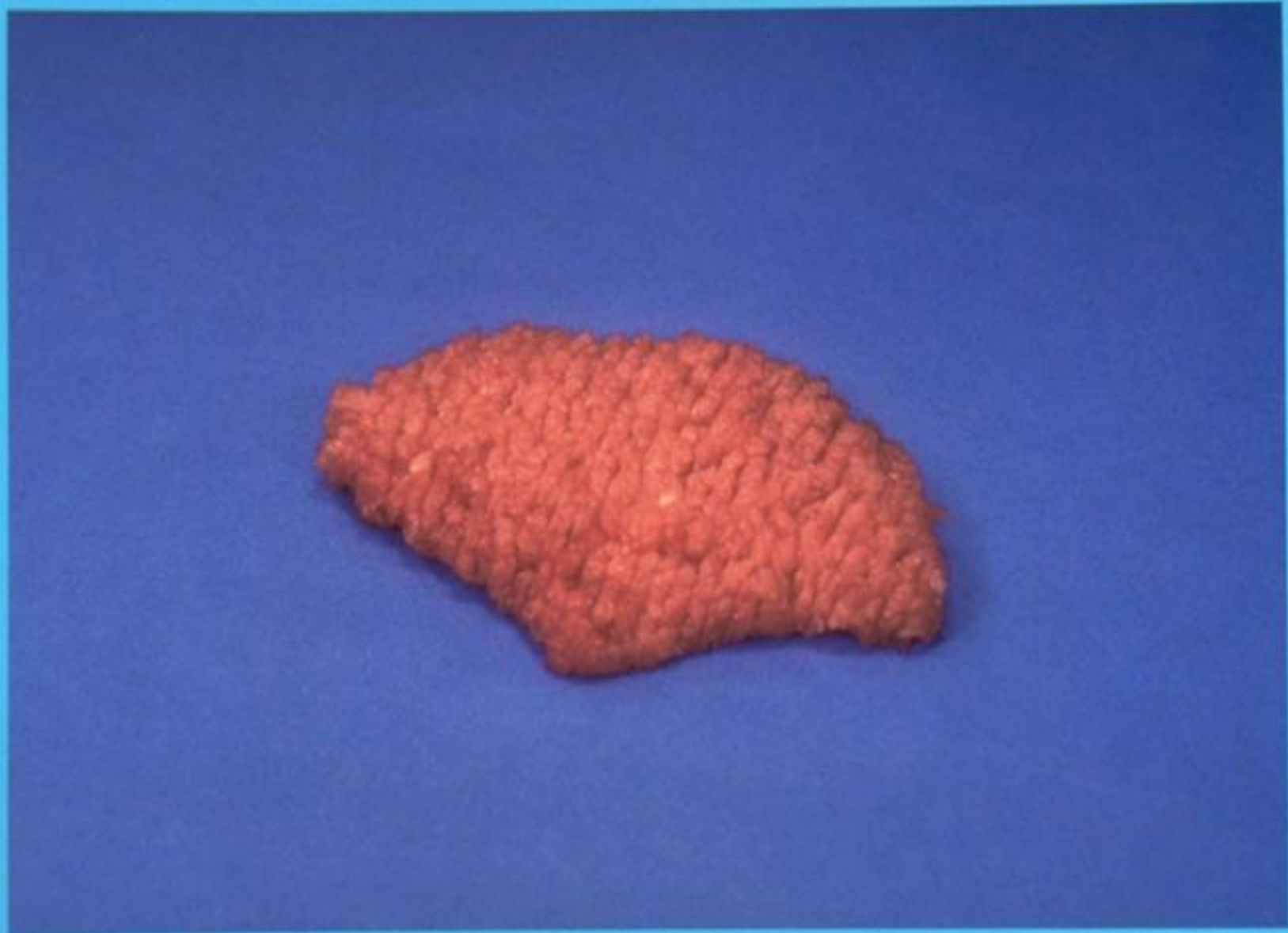
Round Tip Steak Cap Off



Round Top Round Roast



Round Top Round Steak



Cubed Steak



Beef for Stew





Ground Beef